

RPL32 antibody



Catalog Number: 114890

Product name

RPL32 antibody

Specificity

human, mouse, rat; other species not tested.

Antibody description

RPL32 Rabbit Polyclonal antibody. Positive WB detected in HepG2 cells, HeLa cells, mouse lung tissue. Observed molecular weight by Western-blot: 23-25kd

Preparation

This antibody was obtained by immunization of RPL32 recombinant protein (Accession Number: NM_001007073). Purification method: Antigen affinity purified.

Formulation

PBS with 0.02% sodium azide and 50% glycerol pH 7.3.

Storage

Store at -20°C. DO NOT ALIQUOT

Clonality

Polyclonal

Ig Type

Rabbit IgG

Applications

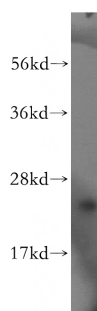
ELISA, WB

Dilutions

Recommended Dilution:

WB: 1:500-1:5000

Validations



HepG2 cells were subjected to SDS PAGE followed by western blot with Catalog No:114890(RPL32 antibody) at dilution of 1:400