

RPL3 antibody

Catalog Number: 114887

Product name

RPL3 antibody

Specificity

Human, Mouse; other species not tested.

Antibody description

RPL3 Rabbit Polyclonal antibody. Positive IHC detected in human prostate cancer tissue. Positive IF detected in HepG2 cells. Positive IP detected in mouse kidney tissue. Positive WB detected in mouse placenta tissue, HEK-293 cells, HeLa cells, human kidney tissue, human placenta tissue, Jurkat cells, K-562 cells, mouse brain tissue, mouse kidney tissue, mouse lung tissue, mouse ovary tissue, mouse pancreas tissue, Raji cells. Observed molecular weight by Western-blot: 46 kDa

Preparation

This antibody was obtained by immunization of RPL3 recombinant protein (Accession Number: NM_000967). Purification method: Antigen affinity purified.

Formulation

PBS with 0.1% sodium azide and 50% glycerol pH 7.3.

Storage

Store at -20°C. DO NOT ALIQUOT

Clonality

Polyclonal

Ig Type

Rabbit IgG

Applications

ELISA, IHC, IF, IP, WB

Dilutions

Recommended Dilution:

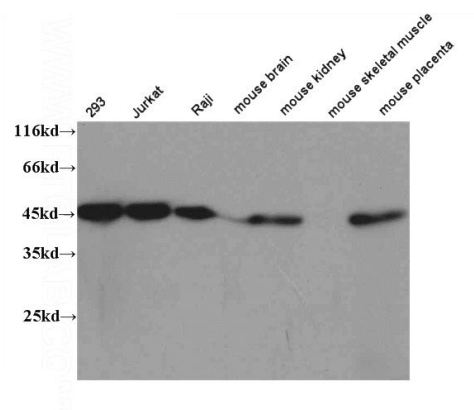
WB: 1:500-1:5000

IP: 1:200-1:2000

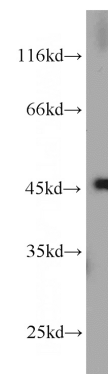
IHC: 1:10-1:100

IF: 1:20-1:200

Validations



WB results of Catalog No:114887(RPL3 antibody)

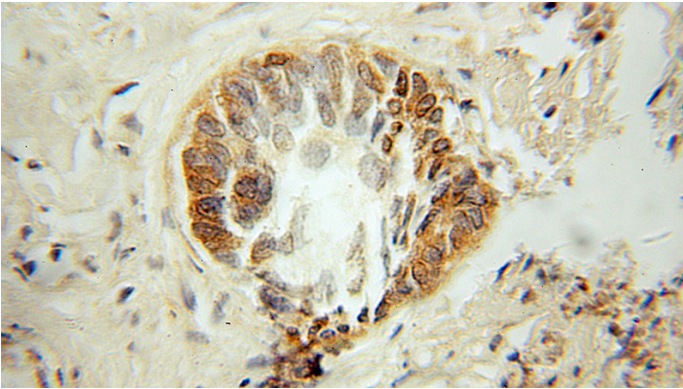


on several lysates.

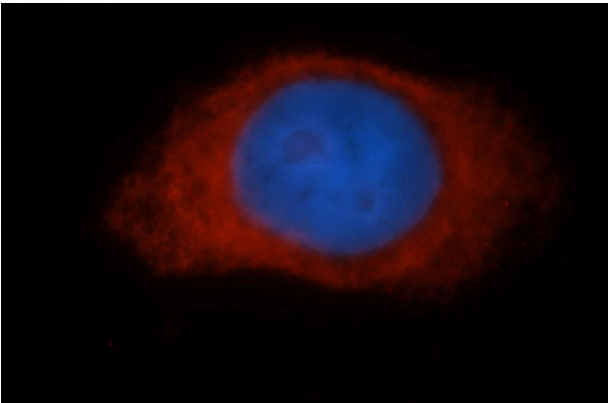
mouse placenta tissue were subjected to SDS PAGE followed by western blot with Catalog No:114887(RPL3 antibody) at dilution of 1:1000

RPL3 antibody

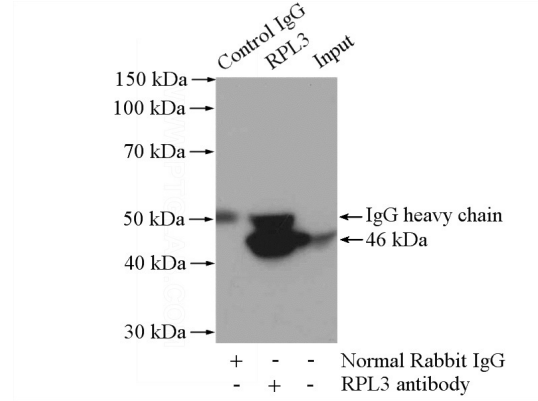
Catalog Number: 114887



Immunohistochemical of paraffin-embedded human prostate cancer using Catalog No:114887(RPL3 antibody) at dilution of 1:10 (under 10x lens)



Immunofluorescent analysis of HepG2 cells, using RPL3 antibody Catalog No:114887 at 1:50 dilution and Rhodamine-labeled goat anti-rabbit IgG (red). Blue pseudocolor = DAPI (fluorescent DNA dye).



IP Result of anti-RPL3 (IP:Catalog No:114887, 4ug; Detection:Catalog No:114887 1:500) with mouse kidney tissue lysate 4000ug.