

# RPL29 antibody

Catalog Number: 114886

## Product name

RPL29 antibody

WB: 1:200-1:2000

IHC: 1:20-1:200

## Specificity

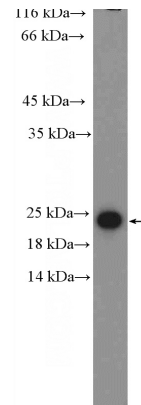
Human, Mouse, Rat; other species not tested.

IF: 1:50-1:500

## Antibody description

RPL29 Rabbit Polyclonal antibody. Positive WB detected in HepG2 cells, HeLa cells, HUVEC cells, mouse pancreas tissue. Positive IF detected in HepG2 cells. Positive IHC detected in human breast cancer tissue, human liver cancer tissue. Observed molecular weight by Western-blot: 20-25 kDa

## Validations



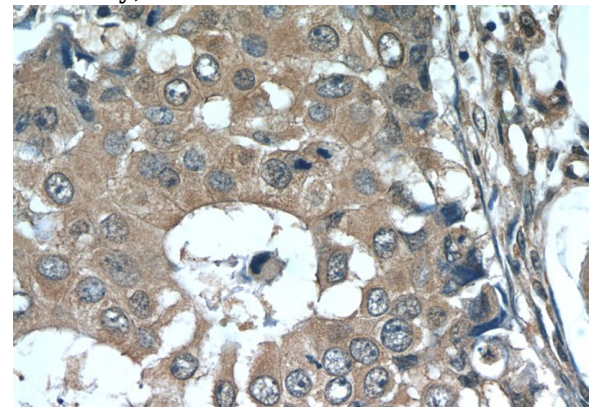
## Preparation

This antibody was obtained by immunization of RPL29 recombinant protein (Accession Number: NM\_000992). Purification method: Antigen affinity purified.

HepG2 cells were subjected to SDS PAGE followed by western blot with Catalog No:114886(RPL29 Antibody) at dilution of 1:600

## Formulation

PBS with 0.1% sodium azide and 50% glycerol pH 7.3.



## Storage

Store at -20°C. DO NOT ALIQUOT

## Clonality

Polyclonal

Immunohistochemistry of paraffin-embedded human breast cancer tissue slide using Catalog No:114886(RPL29 Antibody) at dilution of 1:50 (under 40x lens)

## Ig Type

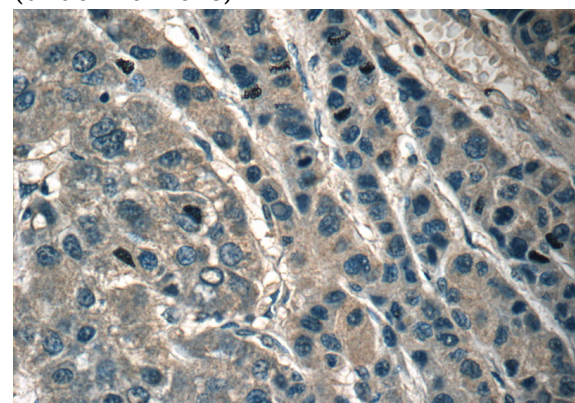
Rabbit IgG

## Applications

ELISA, IHC, WB, IF

## Dilutions

Recommended Dilution:

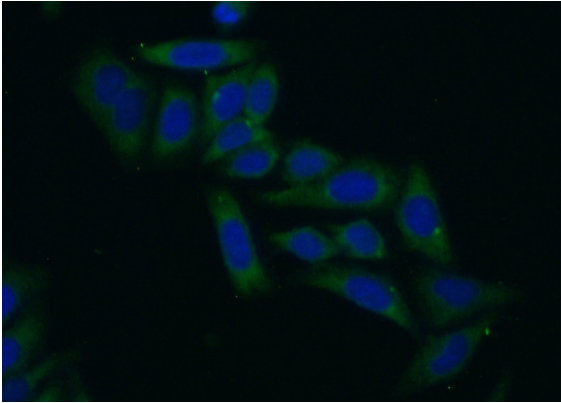


# RPL29 antibody

Catalog Number: 114886

---

Immunohistochemistry of paraffin-embedded human liver cancer tissue slide using Catalog No:114886(RPL29 Antibody) at dilution of 1:50 (under 40x lens)



Immunofluorescent analysis of (10% Formaldehyde) fixed HepG2 cells using Catalog No:114886(RPL29 Antibody) at dilution of 1:50 and Alexa Fluor 488-conjugated AffiniPure Goat Anti-Rabbit IgG(H+L)