

RPL26 antibody



Catalog Number: 114881

Product name

RPL26 antibody

Immunogen

[Human RPL26 Recombinant protein \(GST tag\)](#)

Specificity

Human, Mouse, Rat; other species not tested.

Antibody description

RPL26 Rabbit Polyclonal antibody. Positive WB detected in K-562 cells, HeLa cells, HepG2 cells, Jurkat cells. Positive IF detected in HepG2 cells. Observed molecular weight by Western-blot: 17-22 kDa

Preparation

This antibody was obtained by immunization of RPL26 recombinant protein (Accession Number: NM_000987). Purification method: Antigen affinity purified.

Formulation

PBS with 0.1% sodium azide and 50% glycerol pH 7.3.

Storage

Store at -20°C. DO NOT ALIQUOT

Clonality

Polyclonal

Ig Type

Rabbit IgG

Applications

ELISA, WB, IF

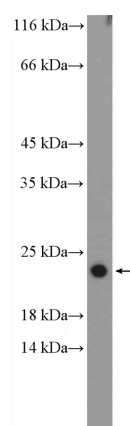
Dilutions

Recommended Dilution:

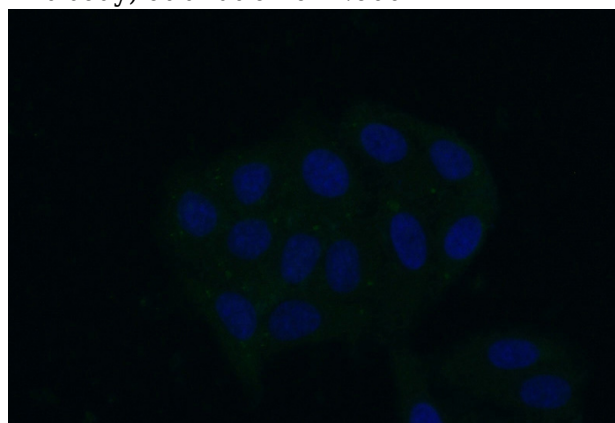
WB: 1:200-1:2000

IF: 1:50-1:500

Validations



K-562 cells were subjected to SDS PAGE followed by western blot with Catalog No:114881(RPL26 Antibody) at dilution of 1:600



Immunofluorescent analysis of (-20oc Ethanol) fixed HepG2 cells using Catalog No:114881(RPL26 Antibody) at dilution of 1:50 and Alexa Fluor 488-conjugated AffiniPure Goat Anti-Rabbit IgG(H+L)