

# RPL24 antibody



Catalog Number: 114880

## Product name

RPL24 antibody

Recommended Dilution:

WB: 1:500-1:5000

## Specificity

Human, Mouse, Rat; other species not tested.

IP: 1:200-1:2000

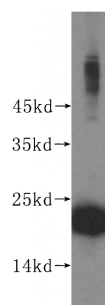
IHC: 1:20-1:200

## Antibody description

RPL24 Rabbit Polyclonal antibody. Positive WB detected in Jurkat cells, A549 cells, HepG2 cells. Positive IP detected in A549 cells. Positive IHC detected in human placenta tissue, human kidney tissue, human liver tissue, human ovary tissue, human spleen tissue. Positive IF detected in Hela cells. Observed molecular weight by Western-blot: 21-23kd

IF: 1:10-1:100

## Validations



## Preparation

This antibody was obtained by immunization of RPL24 recombinant protein (Accession Number: NM\_000986). Purification method: Antigen affinity purified.

Jurkat cells were subjected to SDS PAGE followed by western blot with Catalog No:114880(RPL24 antibody) at dilution of 1:500

## Formulation

PBS with 0.02% sodium azide and 50% glycerol pH 7.3.

## Storage

Store at -20°C. DO NOT ALIQUOT

## Clonality

Polyclonal

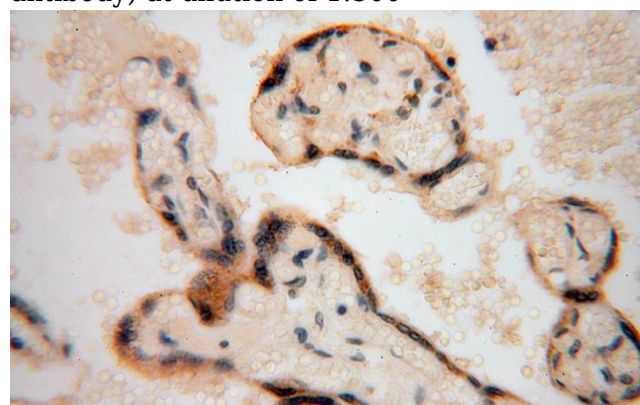
## Ig Type

Rabbit IgG

## Applications

ELISA, WB, IHC, IF, IP

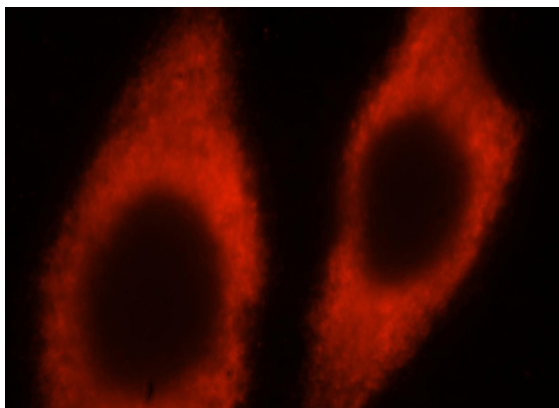
## Dilutions



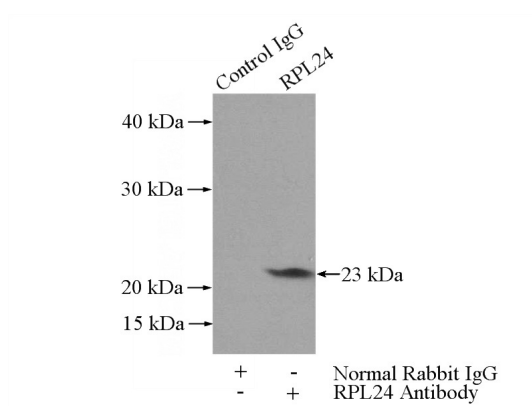
Immunohistochemical of paraffin-embedded human placenta using Catalog No:114880(RPL24 antibody) at dilution of 1:100 (under 40x lens)

# RPL24 antibody

Catalog Number: 114880



Immunofluorescent analysis of HeLa cells, using RPL24 antibody Catalog No:114880 at 1:25 dilution and Rhodamine-labeled goat anti-rabbit



IgG (red).

IP Result of anti-RPL24 (IP:Catalog No:114880, 3ug; Detection:Catalog No:114880 1:500) with A549 cells lysate 2800ug.