

RPL23A antibody



Catalog Number: 114879

Product name

RPL23A antibody

WB: 1:200-1:2000

IP: 1:200-1:2000

Specificity

Human, Mouse, Rat; other species not tested.

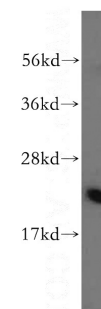
IHC: 1:20-1:200

IF: 1:20-1:200

Antibody description

RPL23A Rabbit Polyclonal antibody. Positive IP detected in HepG2 cells. Positive WB detected in HepG2 cells, HeLa cells, human heart tissue, human liver tissue. Positive IHC detected in human liver tissue. Positive IF detected in HepG2 cells. Observed molecular weight by Western-blot: 20-23 kDa

Validations



Preparation

This antibody was obtained by immunization of RPL23A recombinant protein (Accession Number: NM_000984). Purification method: Antigen affinity purified.

HepG2 cells were subjected to SDS PAGE followed by western blot with Catalog No:114879(RPL23A antibody) at dilution of 1:500

Formulation

PBS with 0.02% sodium azide and 50% glycerol pH 7.3.

Storage

Store at -20°C. DO NOT ALIQUOT

Clonality

Polyclonal

Ig Type

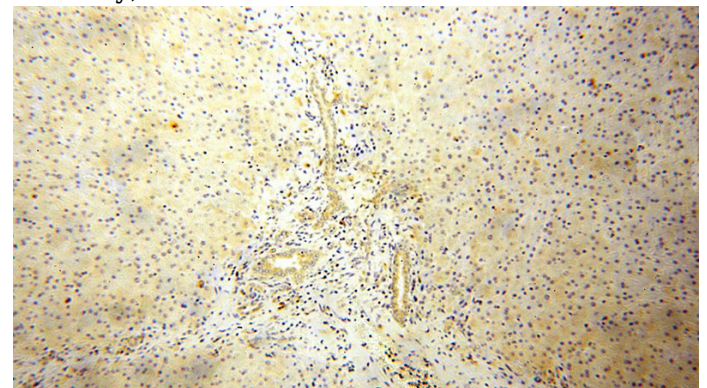
Rabbit IgG

Applications

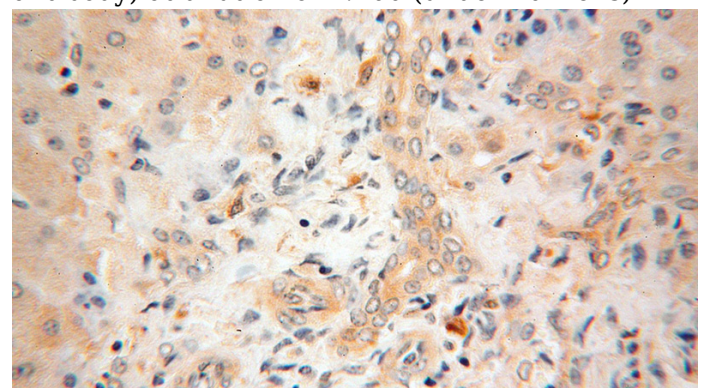
ELISA, WB, IHC, IF, IP

Dilutions

Recommended Dilution:



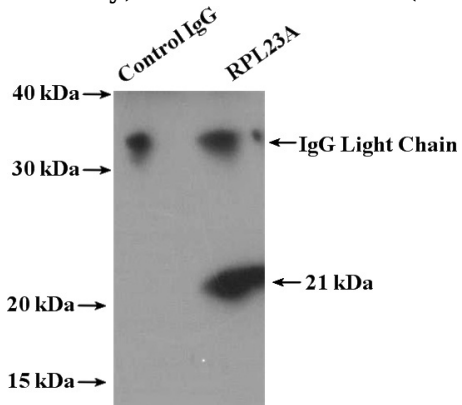
Immunohistochemical of paraffin-embedded human liver using Catalog No:114879(RPL23A antibody) at dilution of 1:100 (under 10x lens)



RPL23A antibody

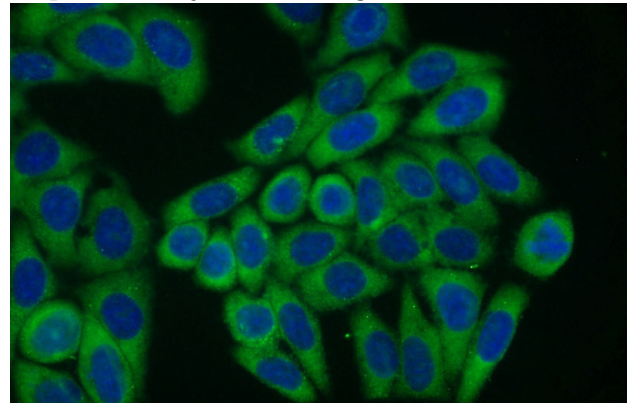
Catalog Number: 114879

Immunohistochemical of paraffin-embedded human liver using Catalog No:114879(RPL23A antibody) at dilution of 1:100 (under 40x lens)



IP Result of anti-RPL23A (IP:Catalog No:114879, 4ug; Detection:Catalog No:114879 1:500) with

HepG2 cells lysate 3200ug.



Immunofluorescent analysis of HepG2 cells using Catalog No:114879(RPL23A Antibody) at dilution of 1:50 and Alexa Fluor 488-conjugated AffiniPure Goat Anti-Rabbit IgG(H+L)