

RPL19 antibody

Catalog Number: 114875

Product name

RPL19 antibody

IP: 1:200-1:2000

IHC: 1:20-1:200

Specificity

Human, Mouse, Rat; other species not tested.

Antibody description

RPL19 Rabbit Polyclonal antibody. Positive WB detected in HeLa cells, MCF7 cells, mouse spleen tissue, mouse testis tissue, PC-3 cells. Positive IP detected in HeLa cells. Positive IHC detected in human brain tissue. Observed molecular weight by Western-blot: 28 kDa

Preparation

This antibody was obtained by immunization of RPL19 recombinant protein (Accession Number: NM_000981). Purification method: Antigen affinity purified.

Formulation

PBS with 0.02% sodium azide and 50% glycerol pH 7.3.

Storage

Store at -20°C. DO NOT ALIQUOT

Clonality

Polyclonal

Ig Type

Rabbit IgG

Applications

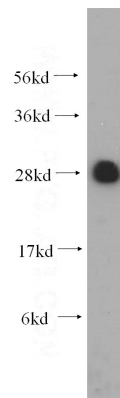
ELISA, WB, IHC, IP

Dilutions

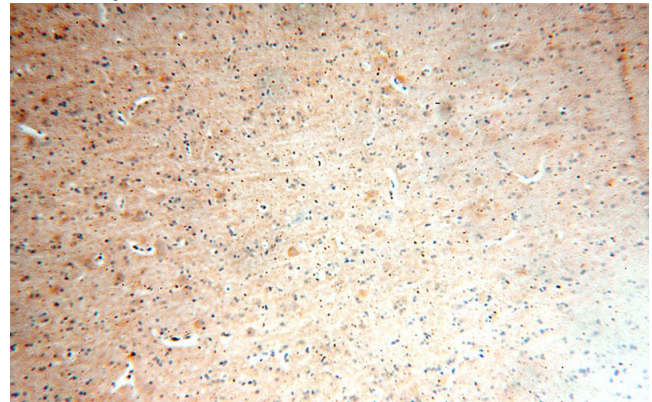
Recommended Dilution:

WB: 1:500-1:5000

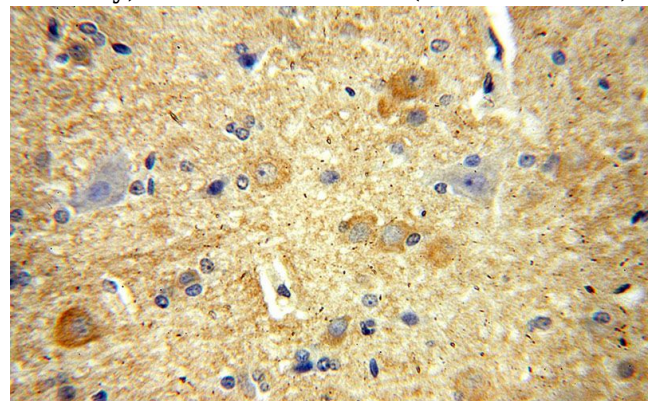
Validations



HeLa cells were subjected to SDS PAGE followed by western blot with Catalog No:114875(RPL19 antibody) at dilution of 1:500



Immunohistochemical of paraffin-embedded human brain using Catalog No:114875(RPL19 antibody) at dilution of 1:100 (under 10x lens)



Immunohistochemical of paraffin-embedded human brain using Catalog No:114875(RPL19 antibody) at dilution of 1:100 (under 10x lens)

RPL19 antibody

Catalog Number: 114875

antibody) at dilution of 1:100 (under 40x lens)

IP Result of anti-RPL19 (IP:Catalog No:114875, 4ug; Detection:Catalog No:114875 1:500) with HeLa cells lysate 4000ug.

