

# RtcB-Specific antibody

Catalog Number: 114855

## Product name

RtcB-Specific antibody

IP: 1:200-1:2000

IF: 1:10-1:100

## Specificity

Human, Mouse; other species not tested.

## Antibody description

RtcB-Specific Rabbit Polyclonal antibody. Positive IF detected in HeLa cells. Positive WB detected in HeLa cells, HepG2 cells, mouse brain tissue. Positive IP detected in HeLa cells. Observed molecular weight by Western-blot: 55kd

## Preparation

This antibody was obtained by immunization of RtcB-Specific recombinant protein (Accession Number: NM\_014306). Purification method: Antigen affinity purified.

## Formulation

PBS with 0.02% sodium azide and 50% glycerol pH 7.3.

## Storage

Store at -20°C. DO NOT ALIQUOT

## Clonality

Polyclonal

## Ig Type

Rabbit IgG

## Applications

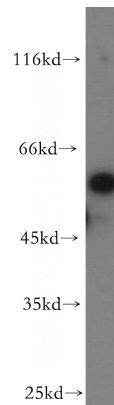
ELISA, WB, IF, IP

## Dilutions

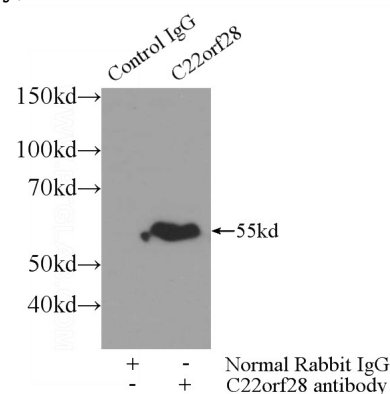
Recommended Dilution:

WB: 1:1000-1:10000

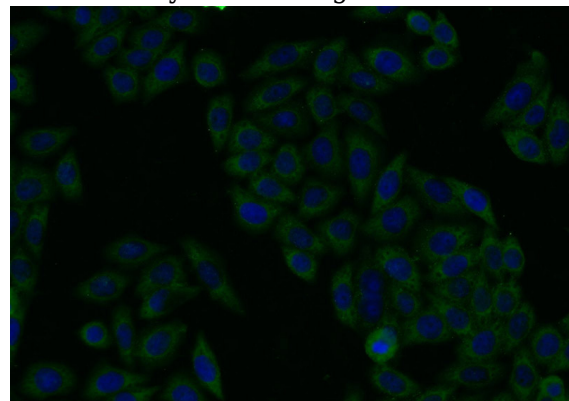
## Validations



HeLa cells were subjected to SDS PAGE followed by western blot with Catalog No:114855(C22orf28 antibody) at dilution of 1:500



IP Result of anti-C22orf28 (IP:Catalog No:114855, 3ug; Detection:Catalog No:114855 1:500) with HeLa cells lysate 3000ug.



Immunofluorescent analysis of HeLa cells using Catalog No:114855(C22orf28 Antibody) at dilution

# RtcB-Specific antibody



Catalog Number: 114855

---

of 1:25 and Alexa Fluor 488-conjugated AffiniPure Goat Anti-Rabbit IgG(H+L)