

RSPH3 antibody



Catalog Number: 114848

Product name

RSPH3 antibody

IHC: 1:20-1:200

IF: 1:20-1:200

Specificity

Human, Mouse, Rat; other species not tested.

Antibody description

RSPH3 Rabbit Polyclonal antibody. Positive IF detected in NIH/3T3 cells. Positive IHC detected in human brain tissue. Positive WB detected in human brain tissue, NIH/3T3 cells. Observed molecular weight by Western-blot: 70 kDa

Preparation

This antibody was obtained by immunization of RSPH3 recombinant protein (Accession Number: BC050604). Purification method: Antigen affinity purified.

Formulation

PBS with 0.02% sodium azide and 50% glycerol pH 7.3.

Storage

Store at -20°C. DO NOT ALIQUOT

Clonality

Polyclonal

Ig Type

Rabbit IgG

Applications

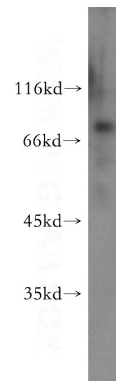
ELISA, WB, IHC, IF

Dilutions

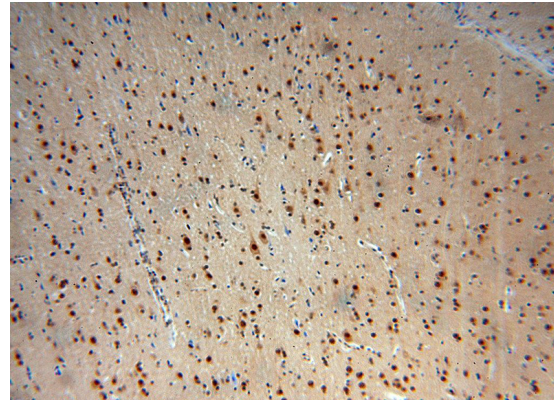
Recommended Dilution:

WB: 1:200-1:2000

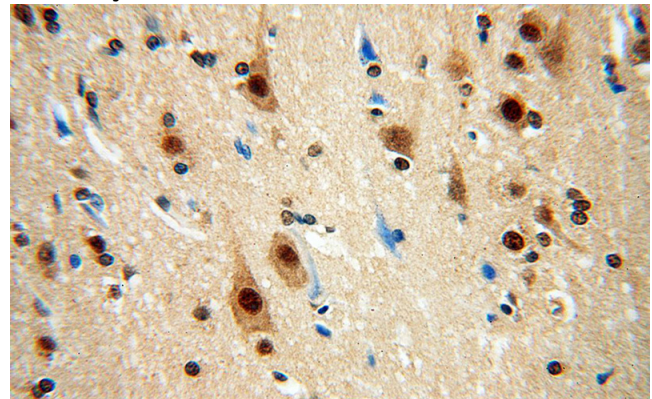
Validations



human brain tissue were subjected to SDS PAGE followed by western blot with Catalog No:114848(RSPH3 antibody) at dilution of 1:600



Immunohistochemical of paraffin-embedded human brain using Catalog No:114848(RSPH3 antibody) at dilution of 1:50 (under 10x lens)

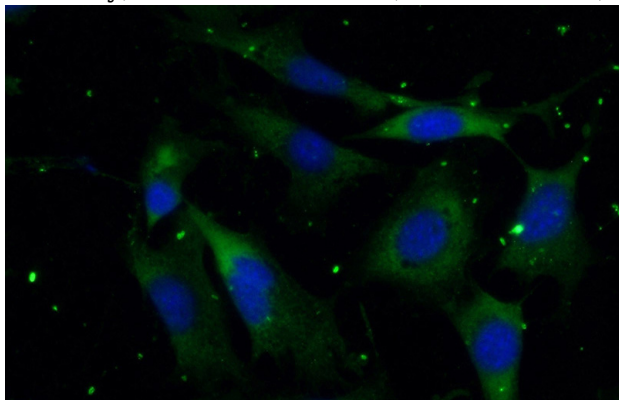


Immunohistochemical of paraffin-embedded human brain using Catalog No:114848(RSPH3

RSPH3 antibody

Catalog Number: 114848

antibody) at dilution of 1:50 (under 40x lens)



Immunofluorescent analysis of (-20oc Ethanol)
fixed NIH/3T3 cells using Catalog
No:114848(RSPH3 Antibody) at dilution of 1:50
and Alexa Fluor 488-conjugated AffiniPure Goat
Anti-Rabbit IgG(H+L)