

# RSL24D1 antibody



Catalog Number: 114847

## Product name

RSL24D1 antibody

## Specificity

Human; other species not tested.

## Antibody description

RSL24D1 Rabbit Polyclonal antibody. Positive WB detected in HepG2 cells, HL-60 cells, PC-3 cells. Positive IF detected in HepG2 cells. Observed molecular weight by Western-blot: 20 kDa

## Preparation

This antibody was obtained by immunization of RSL24D1 recombinant protein (Accession Number: NM\_016304). Purification method: Antigen affinity purified.

## Formulation

PBS with 0.1% sodium azide and 50% glycerol pH 7.3.

## Storage

Store at -20°C. DO NOT ALIQUOT

## Clonality

Polyclonal

## Ig Type

Rabbit IgG

## Applications

ELISA, IF, WB

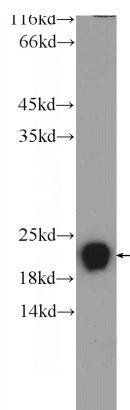
## Dilutions

Recommended Dilution:

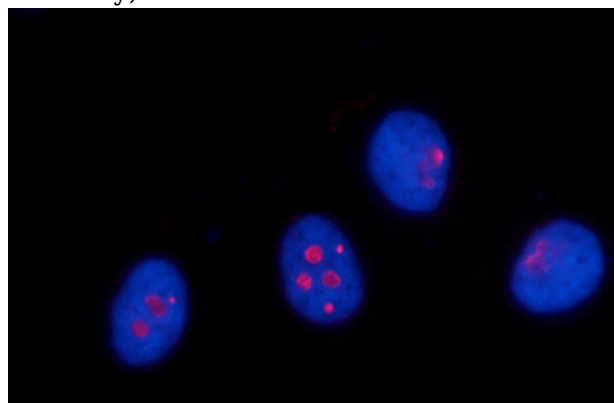
WB: 1:200-1:2000

IF: 1:10-1:100

## Validations



HepG2 cells were subjected to SDS PAGE followed by western blot with Catalog No:114847(RSL24D1 Antibody) at dilution of 1:600



Immunofluorescent analysis of HepG2 cells using Catalog No:114847(RSL24D1 Antibody) at dilution of 1:25 and Rhodamine-Goat anti-Rabbit IgG