

RPS29 antibody

Catalog Number: 114842

Product name

RPS29 antibody

Specificity

Human; other species not tested.

Antibody description

RPS29 Rabbit Polyclonal antibody. Positive IHC detected in human liver tissue. Positive WB detected in HepG2 cells, HeLa cells, MCF7 cells. Observed molecular weight by Western-blot: 7kd

Preparation

This antibody was obtained by immunization of RPS29 recombinant protein (Accession Number: NM_001032). Purification method: Antigen affinity purified.

Formulation

PBS with 0.02% sodium azide and 50% glycerol pH 7.3.

Storage

Store at -20°C. DO NOT ALIQUOT

Clonality

Polyclonal

Ig Type

Rabbit IgG

Applications

ELISA, WB, IHC

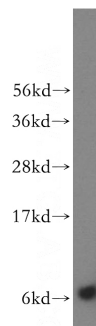
Dilutions

Recommended Dilution:

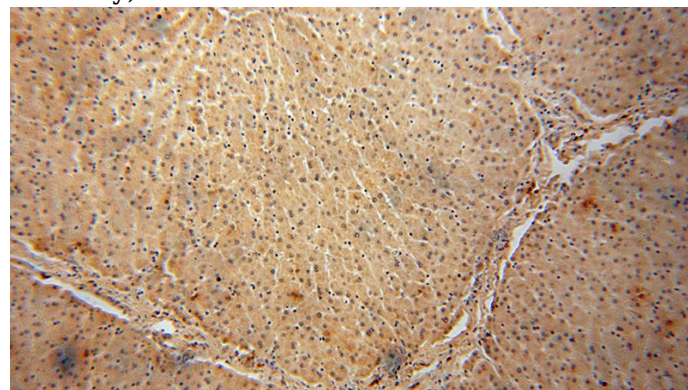
WB: 1:500-1:5000

IHC: 1:20-1:200

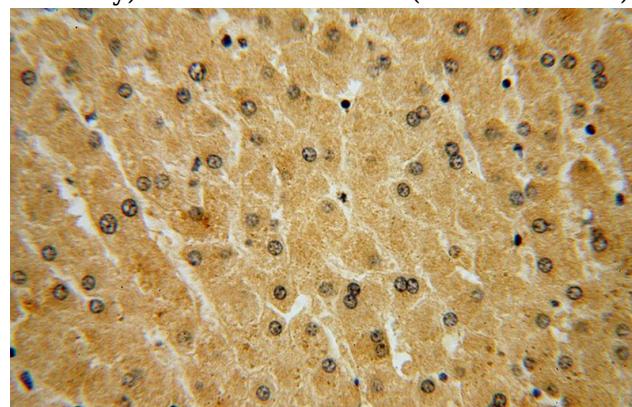
Validations



HepG2 cells were subjected to SDS PAGE followed by western blot with Catalog No:114842(RPS29 antibody) at dilution of 1:500



Immunohistochemical of paraffin-embedded human liver using Catalog No:114842(RPS29 antibody) at dilution of 1:100 (under 10x lens)



Immunohistochemical of paraffin-embedded human liver using Catalog No:114842(RPS29 antibody) at dilution of 1:100 (under 40x lens)