

RPS25 antibody

Catalog Number: 114836

Product name

RPS25 antibody

IHC: 1:20-1:200

IF: 1:20-1:200

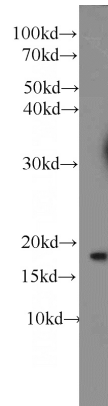
Specificity

Human; other species not tested.

Antibody description

RPS25 Rabbit Polyclonal antibody. Positive IF detected in MCF-7 cells. Positive IHC detected in human breast cancer tissue, human liver tissue. Positive WB detected in Jurkat cells, A549 cells, HeLa cells, K-562 cells, MCF7 cells. Observed molecular weight by Western-blot: 15-17 kDa

Validations



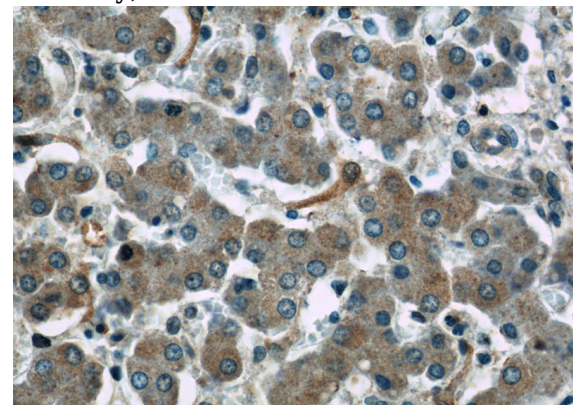
Preparation

This antibody was obtained by immunization of RPS25 recombinant protein (Accession Number: NM_001028). Purification method: Antigen affinity purified.

Jurkat cells were subjected to SDS PAGE followed by western blot with Catalog No:114836(RPS25 antibody) at dilution of 1:1000

Formulation

PBS with 0.02% sodium azide and 50% glycerol pH 7.3.



Storage

Store at -20°C. DO NOT ALIQUOT

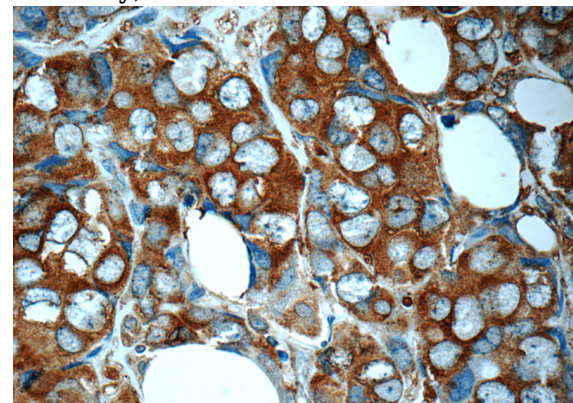
Clonality

Polyclonal

Immunohistochemistry of paraffin-embedded human liver slide using Catalog No:114836(RPS25 Antibody) at dilution of 1:50

Ig Type

Rabbit IgG



Applications

ELISA, WB, IHC, IF

Dilutions

Recommended Dilution:

WB: 1:500-1:5000

Immunohistochemistry of paraffin-embedded human breast cancer slide using Catalog

RPS25 antibody



Catalog Number: 114836

No:114836(RPS25 Antibody) at dilution of 1:50 

Immunofluorescent analysis of MCF-7 cells using

Catalog No:114836(RPS25 Antibody) at dilution of 1:50 and Alexa Fluor 488-conjugated AffiniPure Goat Anti-Rabbit IgG(H+L)