

RPS15 antibody



Catalog Number: 114830

Product name

RPS15 antibody

IHC: 1:20-1:200

IF: 1:20-1:200

Specificity

Human, Mouse, Rat; other species not tested.

Antibody description

RPS15 Rabbit Polyclonal antibody. Positive IF detected in Hela cells. Positive IHC detected in human liver cancer tissue. Positive WB detected in human liver tissue, HeLa cells, L02 cells, mouse brain tissue, mouse liver tissue. Observed molecular weight by Western-blot: 17kd

Preparation

This antibody was obtained by immunization of RPS15 recombinant protein (Accession Number: NM_001018). Purification method: Antigen affinity purified.

Formulation

PBS with 0.02% sodium azide and 50% glycerol pH 7.3.

Storage

Store at -20°C. DO NOT ALIQUOT

Clonality

Polyclonal

Ig Type

Rabbit IgG

Applications

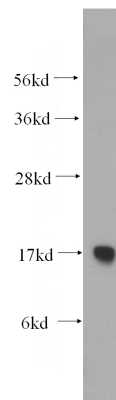
ELISA, WB, IHC, IF

Dilutions

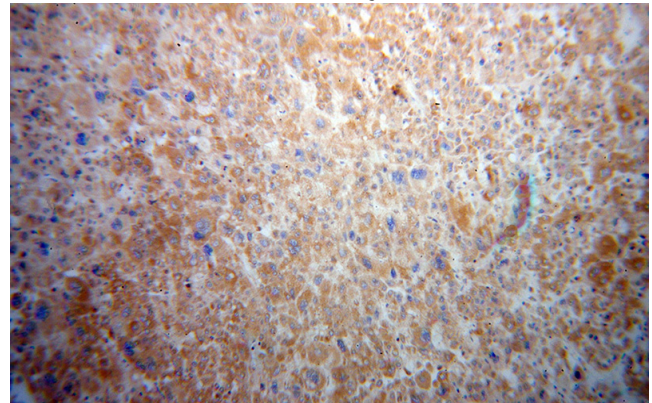
Recommended Dilution:

WB: 1:500-1:5000

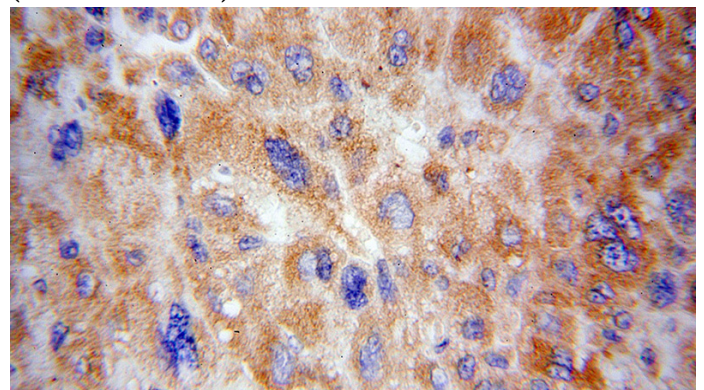
Validations



human liver tissue were subjected to SDS PAGE followed by western blot with Catalog No:114830(RPS15 antibody) at dilution of 1:500



Immunohistochemical of paraffin-embedded human liver cancer using Catalog No:114830(RPS15 antibody) at dilution of 1:100 (under 10x lens)



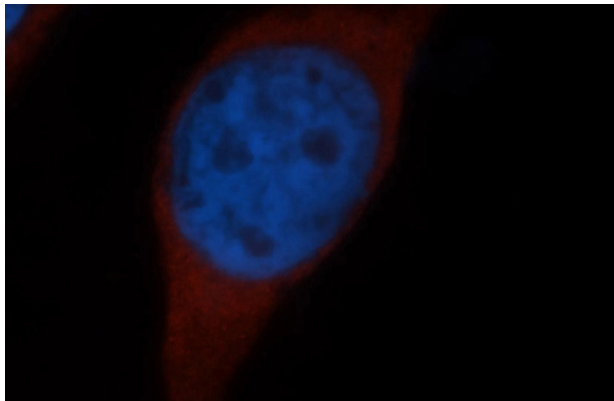
Immunohistochemical of paraffin-embedded

RPS15 antibody



Catalog Number: 114830

human liver cancer using Catalog
No:114830(RPS15 antibody) at dilution of 1:100
(under 40x lens)



Immunofluorescent analysis of Hela cells, using
RPS15 antibody Catalog No:114830 at 1:50
dilution and Rhodamine-labeled goat anti-rabbit
IgG (red). Blue pseudocolor = DAPI (fluorescent
DNA dye).