

# RPS14 antibody



Catalog Number: 114829

## Product name

RPS14 antibody

IHC: 1:20-1:200

IF: 1:10-1:100

## Specificity

Human, Mouse, Rat; other species not tested.

## Antibody description

RPS14 Rabbit Polyclonal antibody. Positive IF detected in HepG2 cells, U2OS cells. Positive IHC detected in human liver tissue. Positive WB detected in HepG2 cells, HeLa cells, mouse liver tissue. Observed molecular weight by Western-blot: 16kd

## Preparation

This antibody was obtained by immunization of RPS14 recombinant protein (Accession Number: NM\_005617). Purification method: Antigen affinity purified.

## Formulation

PBS with 0.02% sodium azide and 50% glycerol pH 7.3.

## Storage

Store at -20°C. DO NOT ALIQUOT

## Clonality

Polyclonal

## Ig Type

Rabbit IgG

## Applications

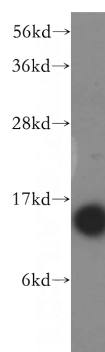
ELISA, WB, IHC, IF

## Dilutions

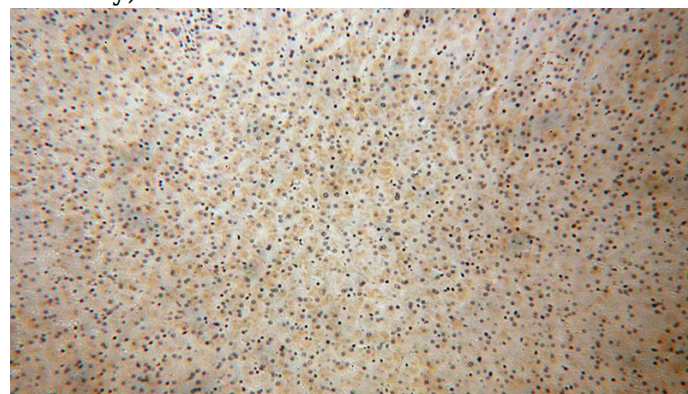
Recommended Dilution:

WB: 1:1000-1:10000

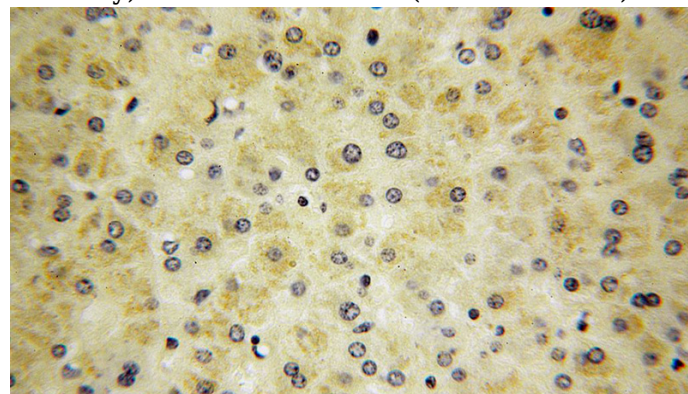
## Validations



HepG2 cells were subjected to SDS PAGE followed by western blot with Catalog No:114829(RPS14 antibody) at dilution of 1:1000



Immunohistochemical of paraffin-embedded human liver using Catalog No:114829(RPS14 antibody) at dilution of 1:200 (under 10x lens)



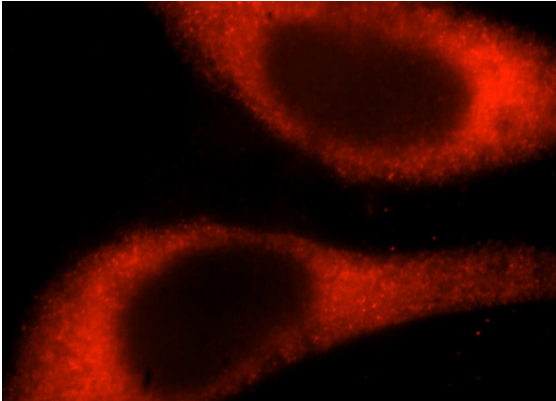
Immunohistochemical of paraffin-embedded human liver using Catalog No:114829(RPS14

# RPS14 antibody

Catalog Number: 114829

---

antibody) at dilution of 1:200 (under 40x lens)



Immunofluorescent analysis of HepG2 cells, using RPS14 antibody Catalog No:114829 at 1:25 dilution and Rhodamine-labeled goat anti-rabbit IgG (red).