

RPP25 antibody



Catalog Number: 114822

Product name

RPP25 antibody

Immunogen

[Human RPP25 Recombinant protein \(His tag\)](#)

Specificity

Human, Mouse, Rat; other species not tested.

Antibody description

RPP25 Rabbit Polyclonal antibody. Positive IHC detected in human small intestine tissue, human cervical cancer tissue. Positive WB detected in HeLa cells, MCF7 cells. Observed molecular weight by Western-blot: 25 kDa

Preparation

This antibody was obtained by immunization of RPP25 recombinant protein (Accession Number: NM_017793). Purification method: Antigen affinity purified.

Formulation

PBS with 0.1% sodium azide and 50% glycerol pH 7.3.

Storage

Store at -20°C. DO NOT ALIQUOT

Clonality

Polyclonal

Ig Type

Rabbit IgG

Applications

ELISA, WB, IHC

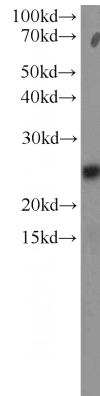
Dilutions

Recommended Dilution:

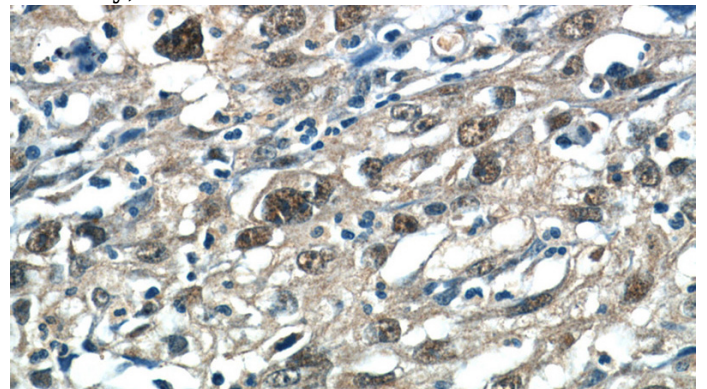
WB: 1:200-1:1000

IHC: 1:20-1:200

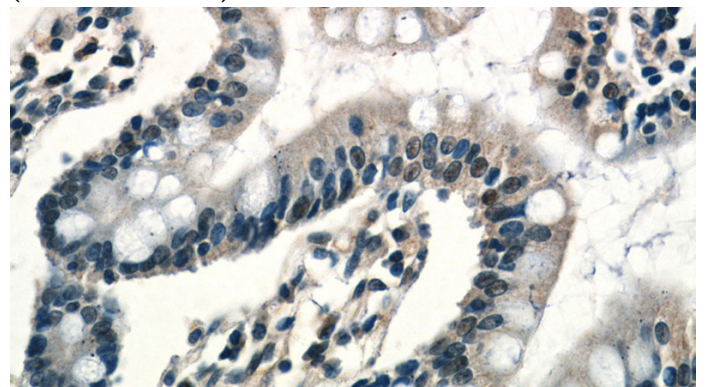
Validations



HeLa cells were subjected to SDS PAGE followed by western blot with Catalog No:114822(RPP25 antibody) at dilution of 1:300



Immunohistochemistry of paraffin-embedded human cervical cancer tissue slide using Catalog No:114822(RPP25 Antibody) at dilution of 1:50 (under 40x lens)



RPP25 antibody



Catalog Number: 114822

Immunohistochemistry of paraffin-embedded
human small intestine tissue slide using Catalog

No:114822(RPP25 Antibody) at dilution of 1:50
(under 40x lens)