

RPL18 antibody



Catalog Number: 114818

Product name

Polyclonal

RPL18 antibody

Ig Type

Specificity

Rabbit IgG

Human, Mouse, Rat; other species not tested.

Applications

Antibody description

ELISA, WB

RPL18 Rabbit Polyclonal antibody. Positive WB detected in HeLa cells, HEK-293 cells, HepG2 cells. Observed molecular weight by Western-blot: 22-26 kDa

Dilutions

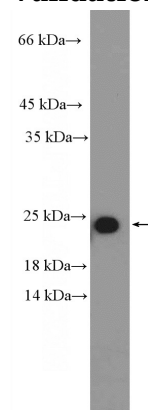
Recommended Dilution:

WB: 1:200-1:2000

Preparation

This antibody was obtained by immunization of RPL18 recombinant protein (Accession Number: NM_000979). Purification method: Antigen affinity purified.

Validations



Formulation

PBS with 0.1% sodium azide and 50% glycerol pH 7.3.

Storage

Store at -20°C. DO NOT ALIQUOT

HeLa cells were subjected to SDS PAGE followed by western blot with Catalog No:114818(RPL18 Antibody) at dilution of 1:600

Clonality