

RPL17 antibody

Catalog Number: 114817

Product name

RPL17 antibody

IP: 1:200-1:2000

IHC: 1:20-1:200

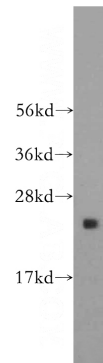
Specificity

Human, Mouse, Rat; other species not tested.

Antibody description

RPL17 Rabbit Polyclonal antibody. Positive IP detected in mouse lung tissue. Positive WB detected in human brain tissue, human stomach tissue, mouse pancreas tissue. Positive IHC detected in human pancreas cancer tissue. Observed molecular weight by Western-blot: 23kd

Validations



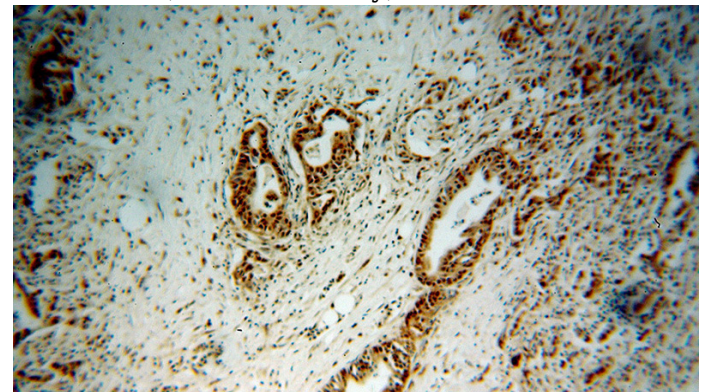
Preparation

This antibody was obtained by immunization of RPL17 recombinant protein (Accession Number: NM_001369557). Purification method: Antigen affinity purified.

human brain tissue were subjected to SDS PAGE followed by western blot with Catalog No:114817(RPL17 antibody) at dilution of 1:800

Formulation

PBS with 0.02% sodium azide and 50% glycerol pH 7.3.



Storage

Store at -20°C. DO NOT ALIQUOT

Clonality

Polyclonal

Immunohistochemical of paraffin-embedded human pancreas cancer using Catalog No:114817(RPL17 antibody) at dilution of 1:100 (under 10x lens)

Ig Type

Rabbit IgG

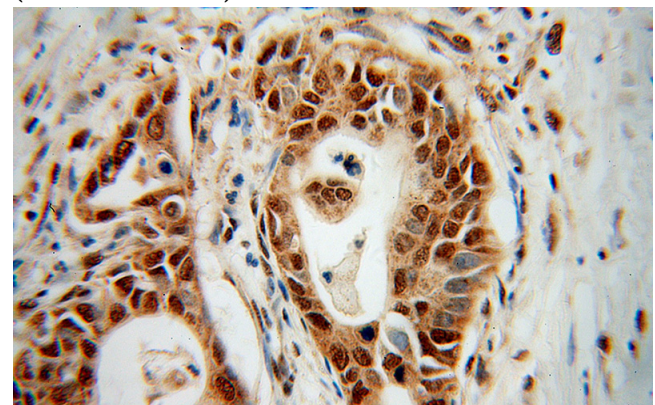
Applications

ELISA, WB, IHC, IP

Dilutions

Recommended Dilution:

WB: 1:200-1:2000



Immunohistochemical of paraffin-embedded

RPL17 antibody

Catalog Number: 114817

human pancreas cancer using Catalog No:114817(RPL17 antibody) at dilution of 1:100 (under 40x lens)

IP Result of anti-RPL17 (IP:Catalog No:114817, 3ug; Detection:Catalog No:114817 1:700) with mouse lung tissue lysate 6000ug.

