

# RPL15 antibody

Catalog Number: 114816

---

## Product name

RPL15 antibody

## Immunogen

[Human RPL15 Recombinant protein \(His tag\)](#)

## Specificity

Human, Mouse, Rat; other species not tested.

## Antibody description

RPL15 Rabbit Polyclonal antibody. Positive WB detected in COLO 320 cells, HeLa cells, K-562 cells, mouse brain tissue, SGC-7901 cells. Observed molecular weight by Western-blot: 27 kDa

## Preparation

This antibody was obtained by immunization of RPL15 recombinant protein (Accession Number: NM\_001253380). Purification method: Antigen affinity purified.

## Formulation

PBS with 0.02% sodium azide and 50% glycerol pH 7.3.

## Storage

Store at -20°C. DO NOT ALIQUOT

## Clonality

Polyclonal

## Ig Type

Rabbit IgG

## Applications

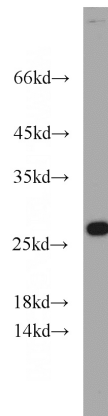
ELISA, WB

## Dilutions

Recommended Dilution:

WB: 1:200-1:1000

## Validations



COLO 320 cells were subjected to SDS PAGE followed by western blot with Catalog No:114816(RPL15 antibody) at dilution of 1:300