

RPL13A antibody



Catalog Number: 114814

Product name

RPL13A antibody

Specificity

Human, Mouse; other species not tested.

Antibody description

RPL13A Rabbit Polyclonal antibody. Positive WB detected in HeLa cells, A549 cells, Jurkat cells, RAW264.7 cells. Observed molecular weight by Western-blot: 25-28kd

Preparation

This antibody was obtained by immunization of RPL13A recombinant protein (Accession Number: NM_012423). Purification method: Antigen affinity purified.

Formulation

PBS with 0.02% sodium azide and 50% glycerol pH 7.3.

Storage

Store at -20°C. DO NOT ALIQUOT

Clonality

Polyclonal

Ig Type

Rabbit IgG

Applications

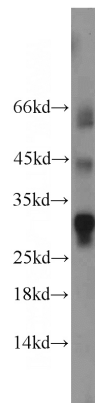
ELISA, WB

Dilutions

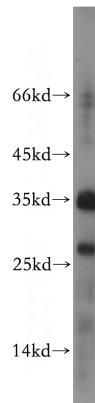
Recommended Dilution:

WB: 1:200-1:2000

Validations



RAW264.7 cells were subjected to SDS PAGE followed by western blot with Catalog No:114814(RPL13A antibody) at dilution of 1:600



HeLa cells were subjected to SDS PAGE followed by western blot with Catalog No:114814(RPL13A antibody) at dilution of 1:400