

# RPL11 antibody



Catalog Number: 114811

## Product name

RPL11 antibody

## Immunogen

[Human RPL11 Recombinant protein \(GST tag\)](#)

## Specificity

Human, Mouse, Rat; other species not tested.

## Antibody description

RPL11 Rabbit Polyclonal antibody. Positive IF detected in BxPC-3 cells. Positive WB detected in human liver tissue, BxPC-3 cells, mouse lung tissue, mouse pancreas tissue, rat liver tissue. Observed molecular weight by Western-blot: 20kd

## Preparation

This antibody was obtained by immunization of RPL11 recombinant protein (Accession Number: NM\_001199802). Purification method: Antigen affinity purified.

## Formulation

PBS with 0.02% sodium azide and 50% glycerol pH 7.3.

## Storage

Store at -20°C. DO NOT ALIQUOT

## Clonality

Polyclonal

## Ig Type

Rabbit IgG

## Applications

ELISA, WB, IF

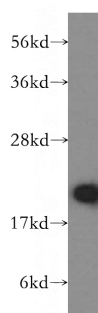
## Dilutions

Recommended Dilution:

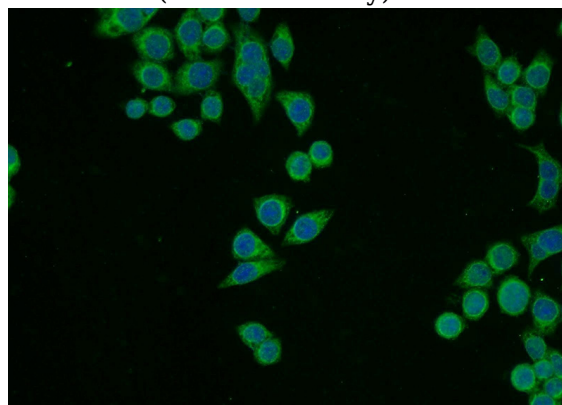
WB: 1:500-1:5000

IF: 1:10-1:100

## Validations



human liver tissue were subjected to SDS PAGE followed by western blot with Catalog No:114811(RPL11 antibody) at dilution of 1:500



Immunofluorescent analysis of BxPC-3 cells using Catalog No:114811(RPL11 Antibody) at dilution of 1:25 and Alexa Fluor 488-conjugated AffiniPure Goat Anti-Rabbit IgG(H+L)