

RPL10A antibody

Catalog Number: 114810

Product name

RPL10A antibody

IP: 1:200-1:2000

IF: 1:10-1:100

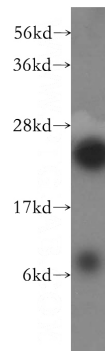
Specificity

Human, Mouse, Rat; other species not tested.

Antibody description

RPL10A Rabbit Polyclonal antibody. Positive WB detected in HepG2 cells, HeLa cells, human brain tissue, human liver tissue. Positive IP detected in HeLa cells. Positive IF detected in HepG2 cells. Observed molecular weight by Western-blot: 25 kDa

Validations



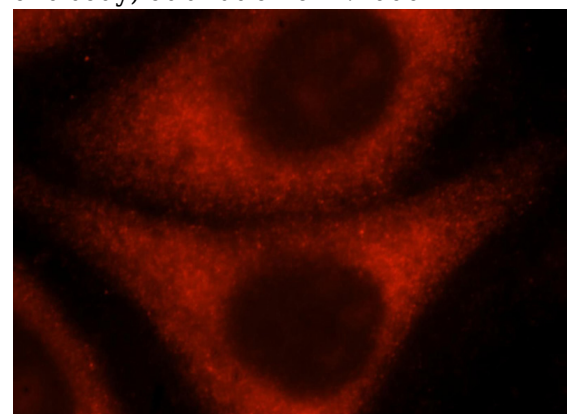
Preparation

This antibody was obtained by immunization of RPL10A recombinant protein (Accession Number: NM_007104). Purification method: Antigen affinity purified.

HepG2 cells were subjected to SDS PAGE followed by western blot with Catalog No:114810(RPL10A antibody) at dilution of 1:1000

Formulation

PBS with 0.02% sodium azide and 50% glycerol pH 7.3.



Storage

Store at -20°C. DO NOT ALIQUOT

Clonality

Polyclonal

Immunofluorescent analysis of HepG2 cells, using RPL10A antibody Catalog No:114810 at 1:25 dilution and Rhodamine-labeled goat anti-rabbit

Ig Type

Rabbit IgG

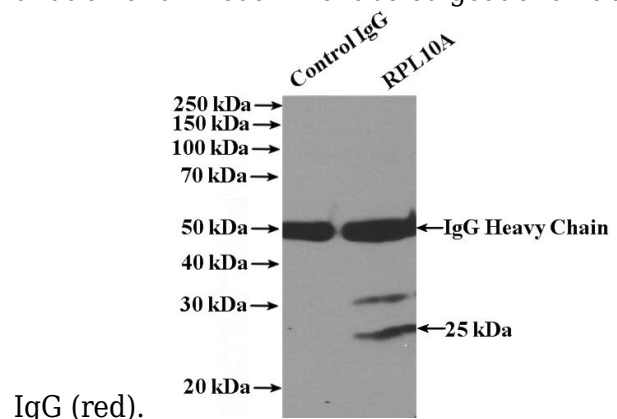
Applications

ELISA, WB, IF, IP

Dilutions

Recommended Dilution:

WB: 1:1000-1:10000



IgG (red).

IP Result of anti-RPL10A (IP:Catalog No:114810,

RPL10A antibody



Catalog Number: 114810

4ug; Detection:Catalog No:114810 1:700) with HeLa cells lysate 1600ug.