

# RPL10 antibody



Catalog Number: 114809

---

## Product name

RPL10 antibody

## Specificity

human, mouse, rat; other species not tested.

## Antibody description

RPL10 Rabbit Polyclonal antibody. Positive WB detected in mouse thymus tissue, COLO 320 cells. Observed molecular weight by Western-blot: 24.5kd

## Preparation

This antibody was obtained by immunization of RPL10 recombinant protein (Accession Number: NM\_006013). Purification method: Antigen affinity purified.

## Formulation

PBS with 0.02% sodium azide and 50% glycerol pH 7.3.

## Storage

Store at -20°C. DO NOT ALIQUOT

## Clonality

Polyclonal

## Ig Type

Rabbit IgG

## Applications

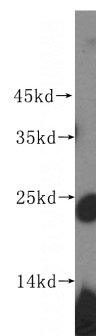
ELISA, WB

## Dilutions

Recommended Dilution:

WB: 1:500-1:5000

## Validations



mouse thymus tissue were subjected to SDS PAGE followed by western blot with Catalog No:114809(RPL10 antibody) at dilution of 1:500