

# ROR1 antibody

Catalog Number: 114787

## Product name

ROR1 antibody

## Specificity

Human, Mouse, Rat; other species not tested.

## Antibody description

ROR1 Rabbit Polyclonal antibody. Positive WB detected in K-562 cells, HeLa cells. Positive IHC detected in human breast cancer tissue, human ovary tumor tissue. Observed molecular weight by Western-blot: 130-140kd

## Preparation

This antibody was obtained by immunization of ROR1 recombinant protein (Accession Number: BC006374). Purification method: Antigen affinity purified.

## Formulation

PBS with 0.02% sodium azide and 50% glycerol pH 7.3.

## Storage

Store at -20°C. DO NOT ALIQUOT

## Clonality

Polyclonal

## Ig Type

Rabbit IgG

## Applications

ELISA, WB, IHC

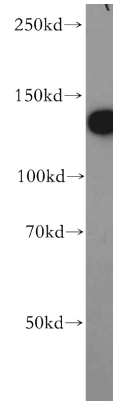
## Dilutions

Recommended Dilution:

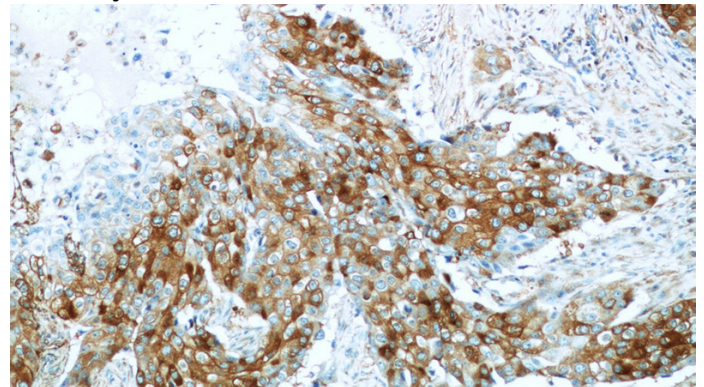
WB: 1:500-1:5000

IHC: 1:20-1:200

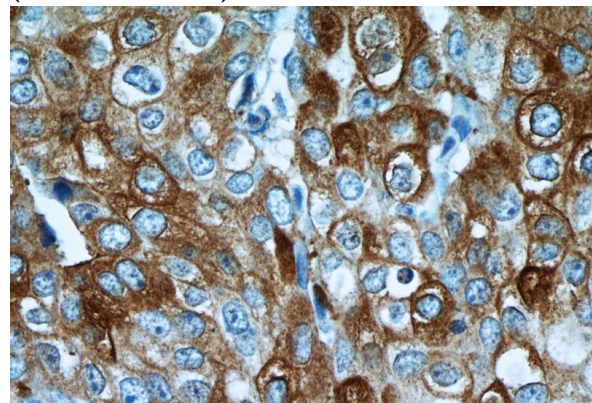
## Validations



K-562 cells were subjected to SDS PAGE followed by western blot with Catalog No:114787(ROR1 antibody) at dilution of 1:500



Immunohistochemistry of paraffin-embedded human breast cancer tissue slide using Catalog No:114787(ROR1 Antibody) at dilution of 1:50 (under 10x lens)



Immunohistochemistry of paraffin-embedded human breast cancer tissue slide using Catalog No:114787(ROR1 Antibody) at dilution of 1:50

# ROR1 antibody



Catalog Number: 114787

---

(under 40x lens)