

ROMO1 antibody



Catalog Number: 114784

Product name

ROMO1 antibody

Polyclonal

Ig Type

Rabbit IgG

Specificity

Human; other species not tested.

Applications

ELISA, IHC

Antibody description

ROMO1 Rabbit Polyclonal antibody. Positive IHC detected in human lung cancer tissue, human gliomas tissue.

Dilutions

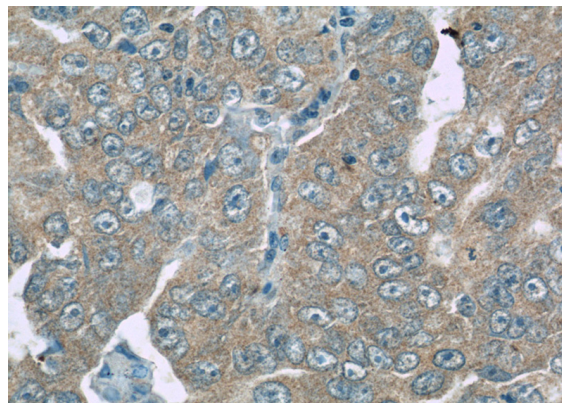
Recommended Dilution:

IHC: 1:20-1:200

Preparation

This antibody was obtained by immunization of ROMO1 recombinant protein (Accession Number: XM_017027678). Purification method: Antigen Affinity purified.

Validations



Formulation

PBS with 0.02% sodium azide and 50% glycerol pH 7.3.

Immunohistochemistry of paraffin-embedded human lung cancer slide using Catalog No:114784(ROMO1 Antibody) at dilution of 1:50

Storage

Store at -20°C. DO NOT ALIQUOT

Clonality