

ROCK2-Specific antibody



Catalog Number: 114780

Product name

ROCK2-Specific antibody

IHC: 1:20-1:200

IF: 1:10-1:100

Specificity

Human, Mouse, Rat; other species not tested.

Antibody description

ROCK2-Specific Rabbit Polyclonal antibody.
Positive WB detected in HeLa cells, mouse brain tissue. Positive IF detected in HepG2 cells.
Positive IHC detected in human colon tissue, human brain tissue. Observed molecular weight by Western-blot: 164 kDa

Preparation

This antibody was obtained by immunization of Peptide (Accession Number: NM_004850).
Purification method: Antigen affinity purified.

Formulation

PBS with 0.02% sodium azide and 50% glycerol
pH 7.3.

Storage

Store at -20°C. DO NOT ALIQUOT

Clonality

Polyclonal

Ig Type

Rabbit IgG

Applications

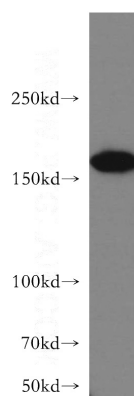
ELISA, WB, IHC, IF

Dilutions

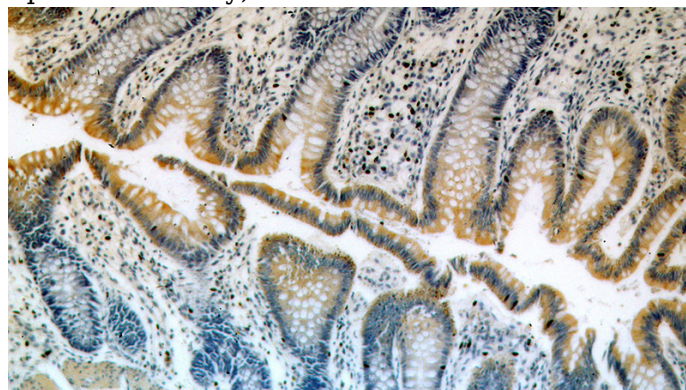
Recommended Dilution:

WB: 1:200-1:1000

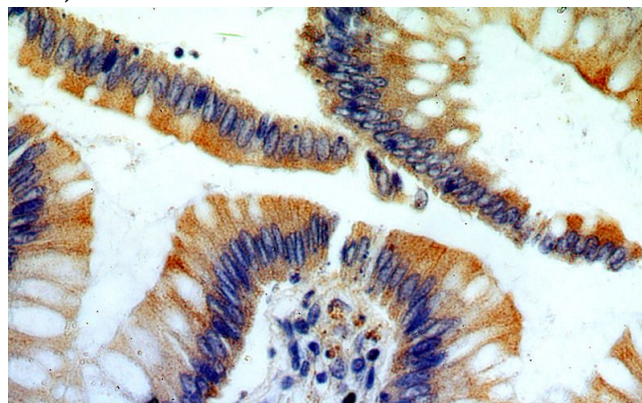
Validations



HeLa cells were subjected to SDS PAGE followed by western blot with Catalog No:114780(Rock2-Specific antibody) at dilution of 1:400



Immunohistochemical of paraffin-embedded human colon using Catalog No:114780(Rock2-Specific antibody) at dilution of 1:100 (under 10x lens)



Immunohistochemical of paraffin-embedded

ROCK2-Specific antibody



Catalog Number: 114780

human colon using Catalog No:114780(RocK2-Specific antibody) at dilution of 1:100 (under 40x

Immunofluorescent analysis of HepG2 cells, using RocK2 antibody Catalog No:114780 at 1:25 dilution and Rhodamine-labeled goat anti-rabbit IgG (red).

