

ROCK1-Specific antibody



Catalog Number: 114778

Product name

ROCK1-Specific antibody

Specificity

Human, Mouse, Rat; other species not tested.

Antibody description

ROCK1-Specific Rabbit Polyclonal antibody. Positive IHC detected in human spleen tissue, human renal cell carcinoma tissue. Positive WB detected in HeLa cells, HT-1080 cells, mouse spleen tissue, NIH/3T3 cells. Observed molecular weight by Western-blot: 150-160kd

Preparation

This antibody was obtained by immunization of Peptide (Accession Number: NM_005406). Purification method: Antigen affinity purified.

Formulation

PBS with 0.02% sodium azide and 50% glycerol pH 7.3.

Storage

Store at -20°C. DO NOT ALIQUOT

Clonality

Polyclonal

Ig Type

Rabbit IgG

Applications

ELISA, WB, IHC

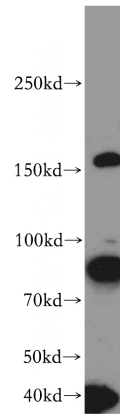
Dilutions

Recommended Dilution:

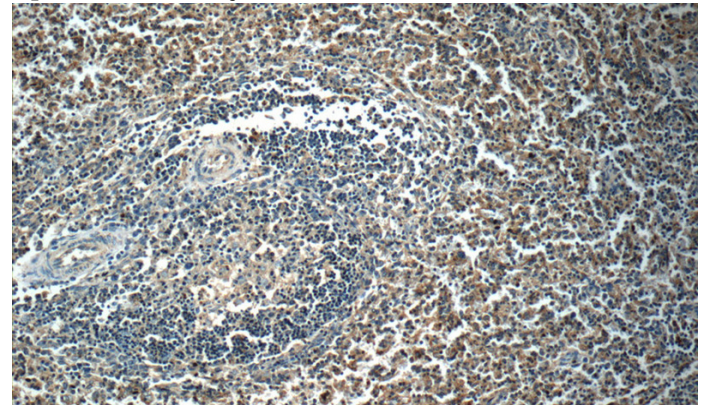
WB: 1:500-1:5000

IHC: 1:20-1:200

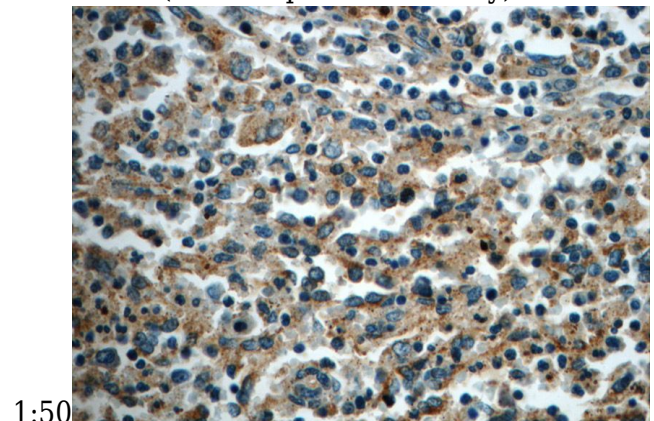
Validations



HeLa cells were subjected to SDS PAGE followed by western blot with Catalog No:114778(RocK1-Specific antibody) at dilution of 1:300



Immunohistochemistry of paraffin-embedded human spleen slide using Catalog No:114778(RocK1-Specific Antibody) at dilution of



1:50 Immunohistochemistry of paraffin-embedded human spleen slide using Catalog No:114778(RocK1-Specific Antibody) at dilution of 1:50