

RNH1 antibody



Catalog Number: 114767

Product name

RNH1 antibody

Immunogen

Specificity

Human, Mouse, Rat; other species not tested.

Antibody description

RNH1 Rabbit Polyclonal antibody. Positive IP detected in mouse liver tissue. Positive WB detected in L02 cells, human brain tissue, human heart tissue, human liver tissue, mouse liver tissue. Positive IHC detected in human liver tissue, human ovary tumor tissue. Positive IF detected in MCF-7 cells. Positive FC detected in MCF-7 cells. Observed molecular weight by Western-blot: 45-50 kDa

Preparation

This antibody was obtained by immunization of RNH1 recombinant protein (Accession Number: NM_203388). Purification method: Antigen affinity purified.

Formulation

PBS with 0.1% sodium azide and 50% glycerol pH 7.3.

Storage

Store at -20°C. DO NOT ALIQUOT

Clonality

Polyclonal

Ig Type

Rabbit IgG

Applications

ELISA, WB, IHC, IF, FC, IP

Dilutions

Recommended Dilution:

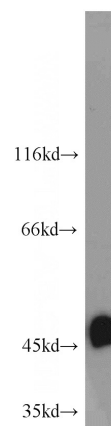
WB: 1:500-1:5000

IP: 1:200-1:2000

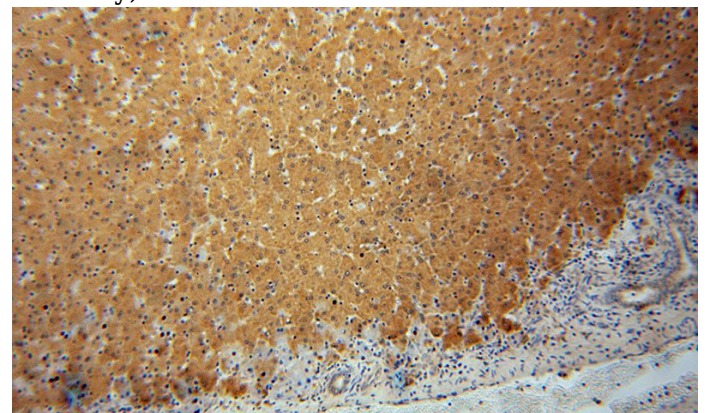
IHC: 1:20-1:200

IF: 1:20-1:200

Validations



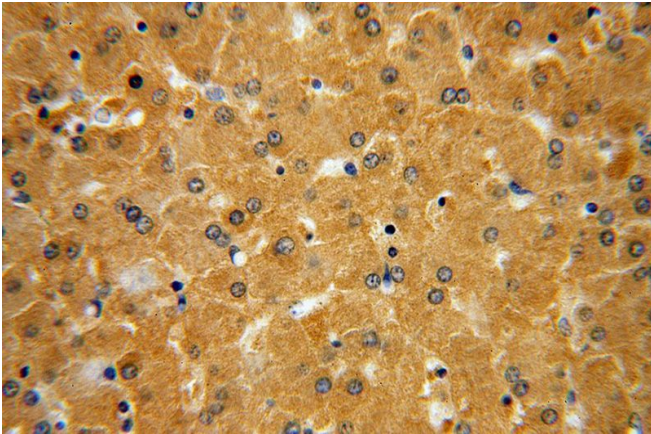
L02 cells were subjected to SDS PAGE followed by western blot with Catalog No:114767(RNH1 antibody) at dilution of 1:2000



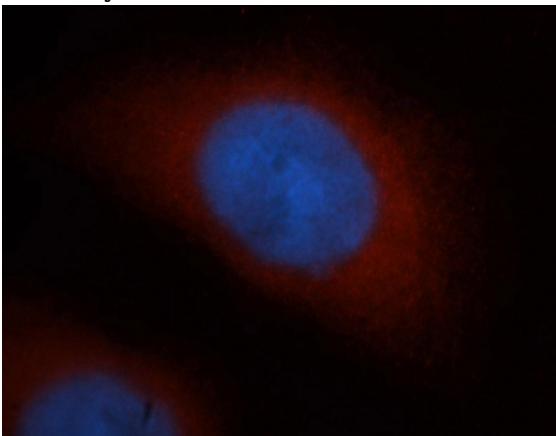
Immunohistochemical of paraffin-embedded human liver using Catalog No:114767(RNH1 antibody) at dilution of 1:50 (under 10x lens)

RNH1 antibody

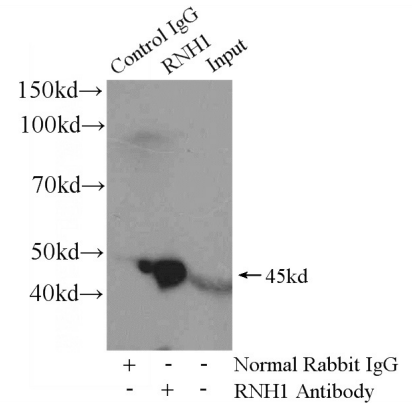
Catalog Number: 114767



Immunohistochemical of paraffin-embedded human liver using Catalog No:114767(RNH1 antibody) at dilution of 1:50 (under 40x lens)

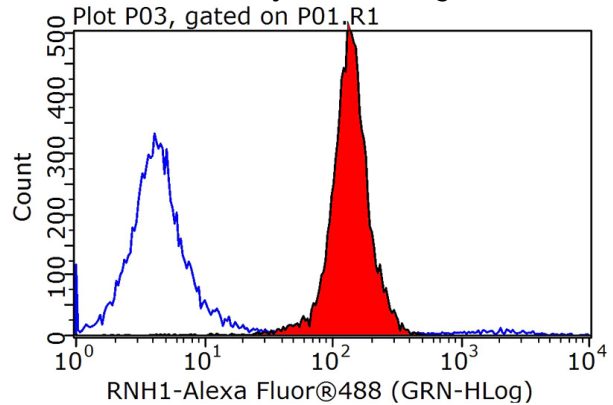


Immunofluorescent analysis of MCF-7 cells, using RNH1 antibody Catalog No:114767 at 1:50 dilution and Rhodamine-labeled goat anti-rabbit IgG (red). Blue pseudocolor = DAPI (fluorescent



DNA dye).

IP Result of anti-RNH1 (IP:Catalog No:114767, 4ug; Detection:Catalog No:114767 1:500) with mouse liver tissue lysate 6400ug.



1X10⁶ MCF-7 cells were stained with 0.2ug RNH1 antibody (Catalog No:114767, red) and control antibody (blue). Fixed with 90% MeOH blocked with 3% BSA (30 min). Alexa Fluor 488-conjugated AffiniPure Goat Anti-Rabbit IgG(H+L) with dilution 1:1000.