

# RNF168 antibody

Catalog Number: 114746

## Product name

RNF168 antibody

IP: 1:200-1:2000

IF: 1:10-1:100

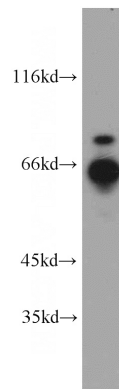
## Specificity

Human; other species not tested.

## Validations

## Antibody description

RNF168 Rabbit Polyclonal antibody. Positive WB detected in HepG2 cells, HeLa cells, human brain tissue, Jurkat cells, Transfected HEK-293 cells. Positive IP detected in HepG2 cells. Positive IF detected in HepG2 cells. Observed molecular weight by Western-blot: 65-70 kDa



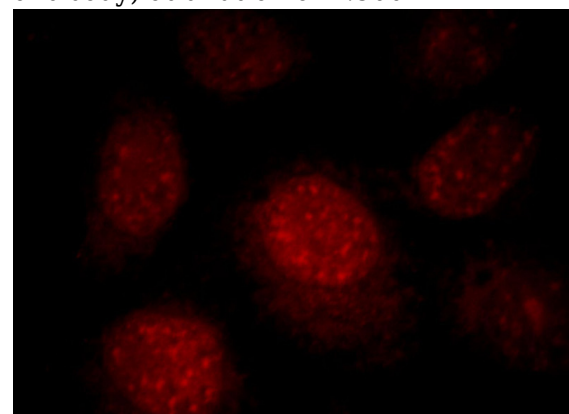
## Preparation

This antibody was obtained by immunization of RNF168 recombinant protein (Accession Number: NM\_152617). Purification method: Antigen affinity purified.

HepG2 cells were subjected to SDS PAGE followed by western blot with Catalog No:114746(RNF168 antibody) at dilution of 1:500

## Formulation

PBS with 0.02% sodium azide and 50% glycerol pH 7.3.



## Storage

Store at -20°C. DO NOT ALIQUOT

## Clonality

Polyclonal

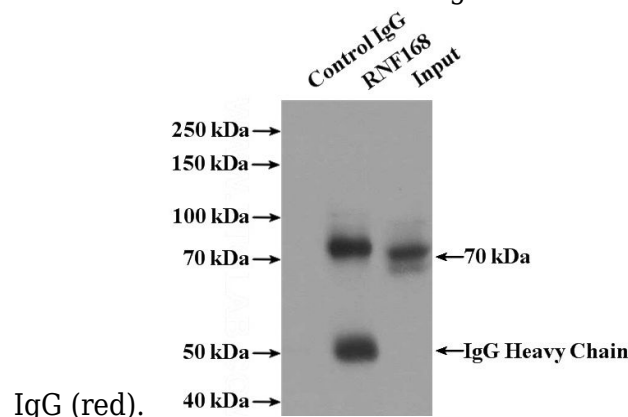
Immunofluorescent analysis of HepG2 cells, using RNF168 antibody Catalog No:114746 at 1:25 dilution and Rhodamine-labeled goat anti-rabbit

## Ig Type

Rabbit IgG

## Applications

ELISA, WB, IF, IP



## Dilutions

Recommended Dilution:

WB: 1:1000-1:10000

IP Result of anti-RNF168 (IP:Catalog No:114746,

# RNF168 antibody



Catalog Number: 114746

---

4ug; Detection:Catalog No:114746 1:500) with HepG2 cells lysate 2400ug.