

# RNASEH2C antibody



Catalog Number: 114731

## Product name

RNASEH2C antibody

WB: 1:500-1:5000

IP: 1:200-1:2000

## Specificity

Human; other species not tested.

IHC: 1:20-1:200

## Antibody description

RNASEH2C Rabbit Polyclonal antibody. Positive IHC detected in human brain tissue, human lung tissue, human skin tissue, human spleen tissue. Positive WB detected in human testis tissue, HEK-293 cells, HeLa cells, human spleen tissue. Positive IP detected in HEK-293 cells. Observed molecular weight by Western-blot: 22 kDa

## Preparation

This antibody was obtained by immunization of RNASEH2C recombinant protein (Accession Number: NM\_032193). Purification method: Antigen affinity purified.

## Formulation

PBS with 0.02% sodium azide and 50% glycerol pH 7.3.

## Storage

Store at -20°C. DO NOT ALIQUOT

## Clonality

Polyclonal

## Ig Type

Rabbit IgG

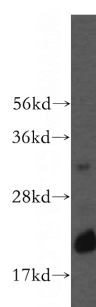
## Applications

ELISA, WB, IHC, IP

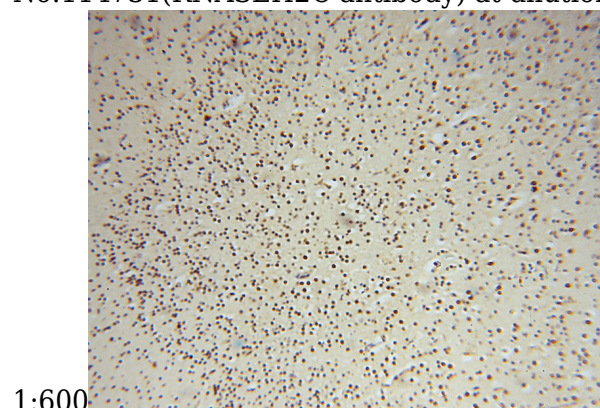
## Dilutions

Recommended Dilution:

## Validations

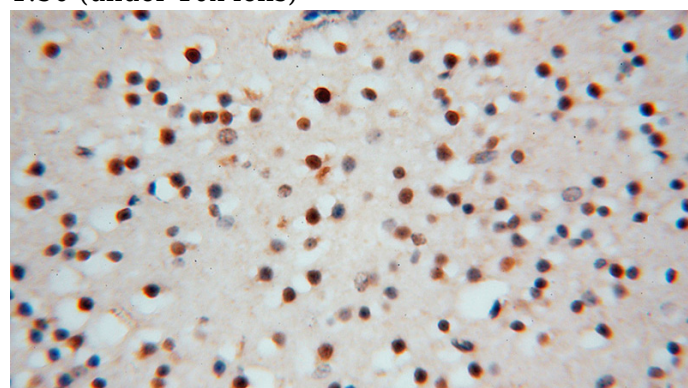


human testis tissue were subjected to SDS PAGE followed by western blot with Catalog No:114731(RNASEH2C antibody) at dilution of



1:600

Immunohistochemical of paraffin-embedded human brain using Catalog No:114731(RNASEH2C antibody) at dilution of 1:50 (under 10x lens)

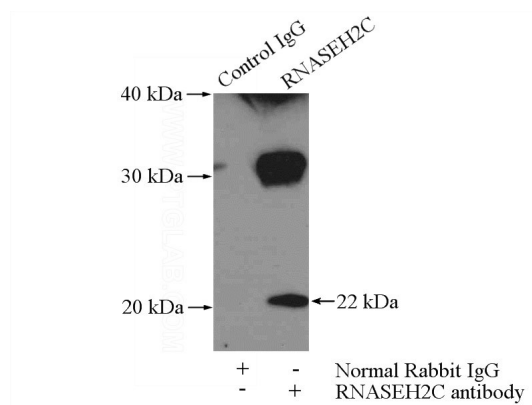


# RNASEH2C antibody



Catalog Number: 114731

Immunohistochemical of paraffin-embedded human brain using Catalog No:114731(RNASEH2C antibody) at dilution of 1:50 (under 40x lens)



IP Result of anti-RNASEH2C (IP:Catalog No:114731, 3ug; Detection:Catalog No:114731 1:500) with HEK-293 cells lysate 3200ug.