

# RNASEH2A antibody



Catalog Number: 114729

## Product name

RNASEH2A antibody

IP: 1:200-1:2000

IHC: 1:20-1:200

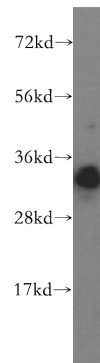
## Specificity

Human; other species not tested.

## Validations

## Antibody description

RNASEH2A Rabbit Polyclonal antibody. Positive IHC detected in human testis tissue, human spleen tissue. Positive WB detected in human liver tissue, HeLa cells. Positive IP detected in mouse liver tissue. Observed molecular weight by Western-blot: 33 kDa



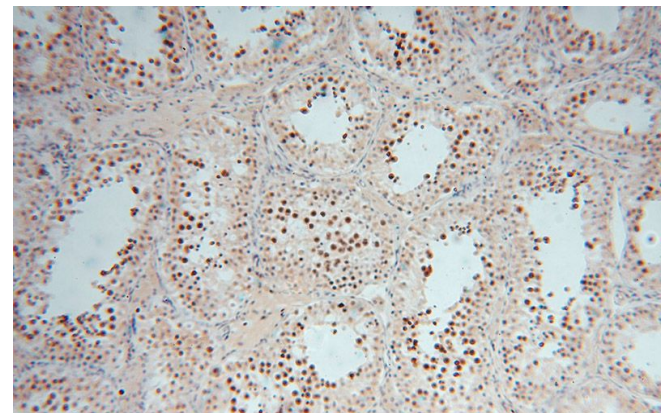
## Preparation

This antibody was obtained by immunization of RNASEH2A recombinant protein (Accession Number: NM\_006397). Purification method: Antigen affinity purified.

human liver tissue were subjected to SDS PAGE followed by western blot with Catalog No:114729(RNASEH2A antibody) at dilution of 1:500

## Formulation

PBS with 0.02% sodium azide and 50% glycerol pH 7.3.



## Storage

Store at -20°C. DO NOT ALIQUOT

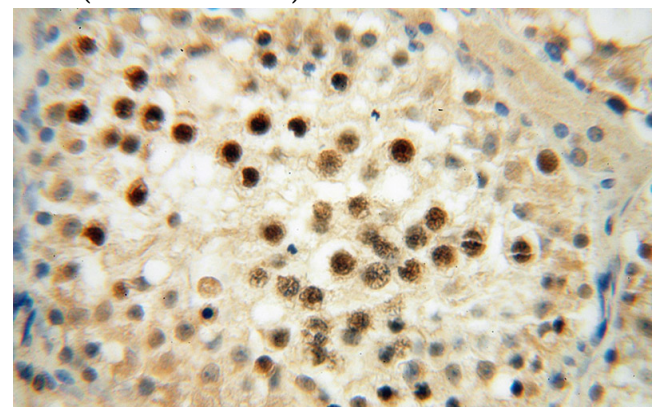
## Clonality

Polyclonal

Immunohistochemical of paraffin-embedded human testis using Catalog No:114729(RNASEH2A antibody) at dilution of 1:50 (under 10x lens)

## Ig Type

Rabbit IgG



## Applications

ELISA, WB, IHC, IP

## Dilutions

Recommended Dilution:

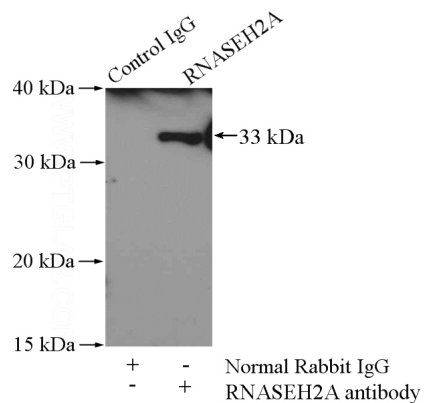
WB: 1:200-1:2000

# RNASEH2A antibody

Catalog Number: 114729

---

Immunohistochemical of paraffin-embedded human testis using Catalog No:114729(RNASEH2A antibody) at dilution of 1:50 (under 40x lens)



IP Result of anti-RNASEH2A (IP:Catalog No:114729, 4ug; Detection:Catalog No:114729 1:500) with mouse liver tissue lysate 4000ug.