

RMI1 antibody

Catalog Number: 114722

Product name

RMI1 antibody

IP: 1:500-1:5000

IHC: 1:20-1:200

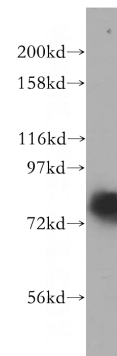
Specificity

Human; other species not tested.

Validations

Antibody description

RMI1 Rabbit Polyclonal antibody. Positive IHC detected in human gliomas tissue. Positive IP detected in HeLa cells. Positive WB detected in HepG2 cells, HeLa cells, Jurkat cells. Observed molecular weight by Western-blot: 75kd



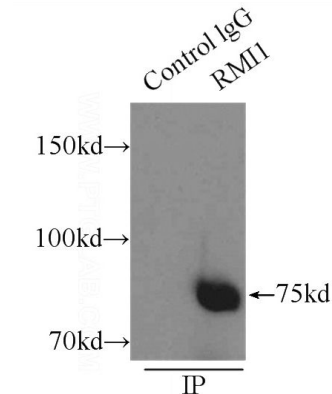
Preparation

This antibody was obtained by immunization of RMI1 recombinant protein (Accession Number: BC064937). Purification method: Antigen affinity purified.

HepG2 cells were subjected to SDS PAGE followed by western blot with Catalog No:114722(RMI1 antibody) at dilution of 1:500

Formulation

PBS with 0.02% sodium azide and 50% glycerol pH 7.3.



Storage

Store at -20°C. DO NOT ALIQUOT

IP Result of anti-RMI1 (IP:Catalog No:114722, 3ug; Detection:Catalog No:114722 1:1500) with HeLa cells lysate 3800ug.

Clonality

Polyclonal

Ig Type

Rabbit IgG

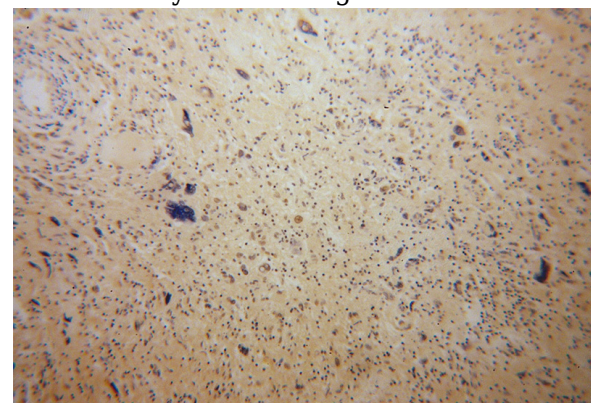
Applications

ELISA, IHC, IP, WB

Dilutions

Recommended Dilution:

WB: 1:200-1:2000

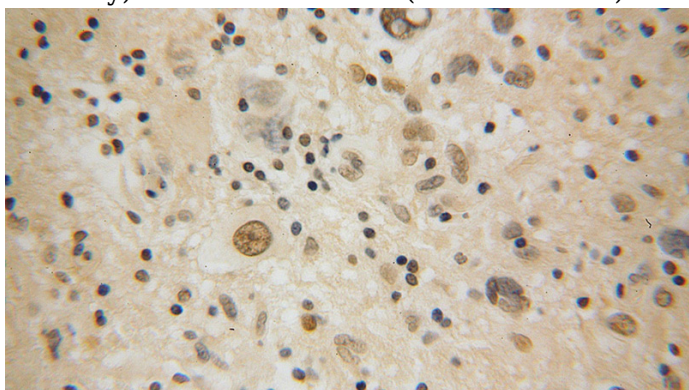


Immunohistochemical of paraffin-embedded human gliomas using Catalog No:114722(RMI1

RMI1 antibody

Catalog Number: 114722

antibody) at dilution of 1:100 (under 10x lens)



Immunohistochemical of paraffin-embedded human gliomas using Catalog No:114722(RMI1 antibody) at dilution of 1:100 (under 40x lens)