

# RLBP1 antibody



Catalog Number: 114719

## Product name

RLBP1 antibody

## Specificity

human, mouse, rat; other species not tested.

## Antibody description

RLBP1 Rabbit Polyclonal antibody. Positive IHC detected in human eye. Positive WB detected in mouse eye tissue, HepG2 cells. Observed molecular weight by Western-blot: 36kd

## Preparation

This antibody was obtained by immunization of RLBP1 recombinant protein (Accession Number: NM\_000326). Purification method: Antigen affinity purified.

## Formulation

PBS with 0.02% sodium azide and 50% glycerol pH 7.3.

## Storage

Store at -20°C. DO NOT ALIQUOT

## Clonality

Polyclonal

## Ig Type

Rabbit IgG

## Applications

ELISA, WB, IHC

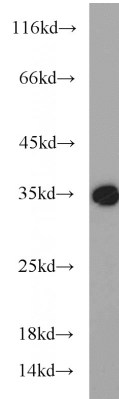
## Dilutions

Recommended Dilution:

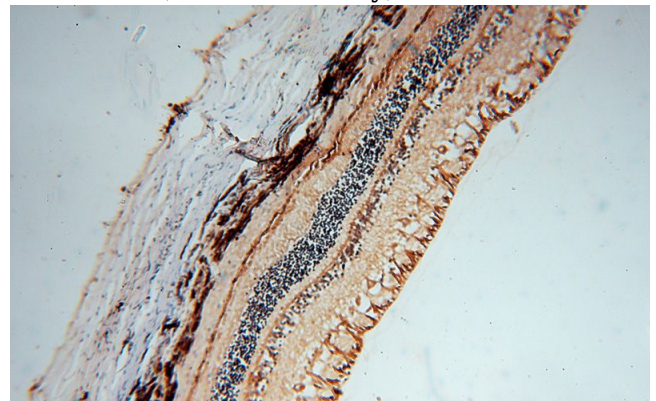
WB: 1:200-1:2000

IHC: 1:20-1:200

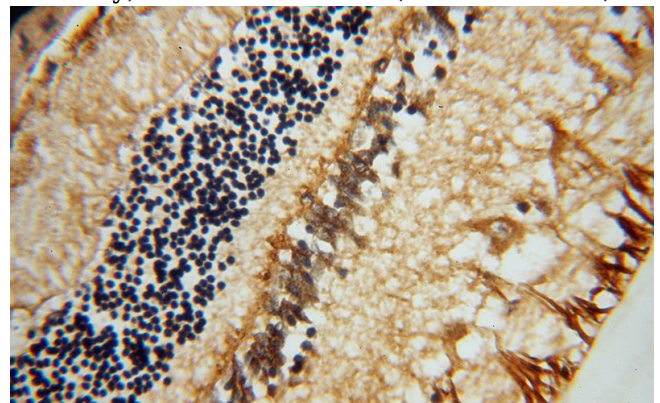
## Validations



mouse eye tissue were subjected to SDS PAGE followed by western blot with Catalog No:114719(RLBP1 antibody) at dilution of 1:500



Immunohistochemical of paraffin-embedded human eye using Catalog No:114719(RLBP1 antibody) at dilution of 1:50 (under 10x lens)



Immunohistochemical of paraffin-embedded human eye using Catalog No:114719(RLBP1 antibody) at dilution of 1:50 (under 40x lens)