

RINT1 antibody

Catalog Number: 114711

Product name

RINT1 antibody

IHC: 1:20-1:200

IF: 1:10-1:100

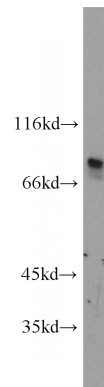
Specificity

Human, Mouse, Rat; other species not tested.

Antibody description

RINT1 Rabbit Polyclonal antibody. Positive WB detected in HepG2 cells. Positive IHC detected in human breast cancer tissue, human liver cancer tissue. Positive IF detected in HepG2 cells. Observed molecular weight by Western-blot: 87kd

Validations



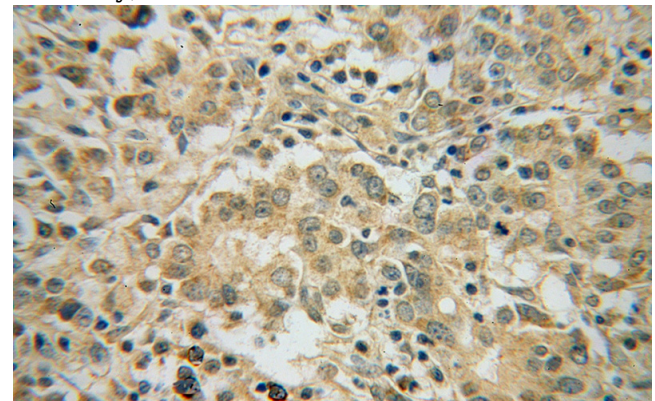
Preparation

This antibody was obtained by immunization of RINT1 recombinant protein (Accession Number: NM_021930). Purification method: Antigen affinity purified.

HepG2 cells were subjected to SDS PAGE followed by western blot with Catalog No:114711(RINT1 antibody) at dilution of 1:500

Formulation

PBS with 0.02% sodium azide and 50% glycerol pH 7.3.



Storage

Store at -20°C. DO NOT ALIQUOT

Clonality

Polyclonal

Immunohistochemical of paraffin-embedded human breast cancer using Catalog No:114711(RINT1 antibody) at dilution of 1:50 (under 40x lens)

Ig Type

Rabbit IgG

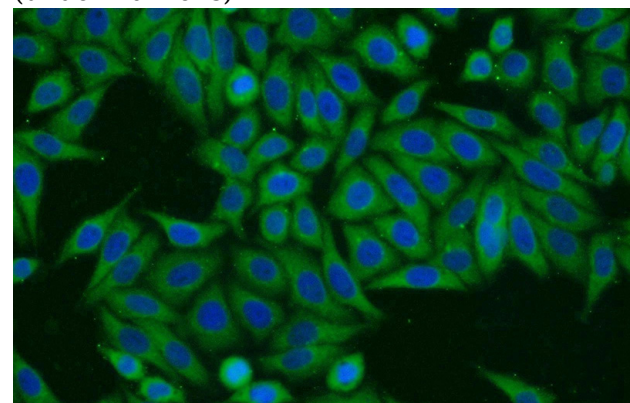
Applications

ELISA, WB, IHC, IF

Dilutions

Recommended Dilution:

WB: 1:200-1:1000



Immunofluorescent analysis of HepG2 cells using

RINT1 antibody



Catalog Number: 114711

Catalog No:114711(RINT1 Antibody) at dilution of 1:25 and Alexa Fluor 488-conjugated AffiniPure Goat Anti-Rabbit IgG(H+L)