

RERG antibody

Catalog Number: 114692

Product name

RERG antibody

IHC: 1:20-1:200

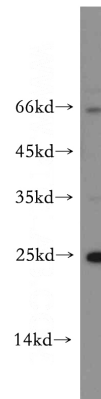
Specificity

Human, Mouse; other species not tested.

Antibody description

RERG Rabbit Polyclonal antibody. Positive IHC detected in human breast cancer tissue, human brain tissue, human liver cancer tissue, human placenta tissue, human skin tissue. Positive WB detected in MCF7 cells, NIH/3T3 cells. Observed molecular weight by Western-blot: 23-26 kDa

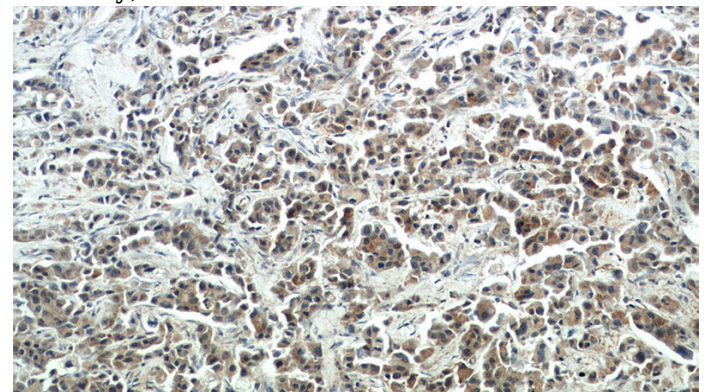
Validations



MCF7 cells were subjected to SDS PAGE followed by western blot with Catalog No:114692(RERG antibody) at dilution of 1:1000

Preparation

This antibody was obtained by immunization of RERG recombinant protein (Accession Number: NM_032918). Purification method: Antigen affinity purified.



Formulation

PBS with 0.02% sodium azide and 50% glycerol pH 7.3.

Storage

Store at -20°C. DO NOT ALIQUOT

Clonality

Polyclonal

Ig Type

Rabbit IgG

Applications

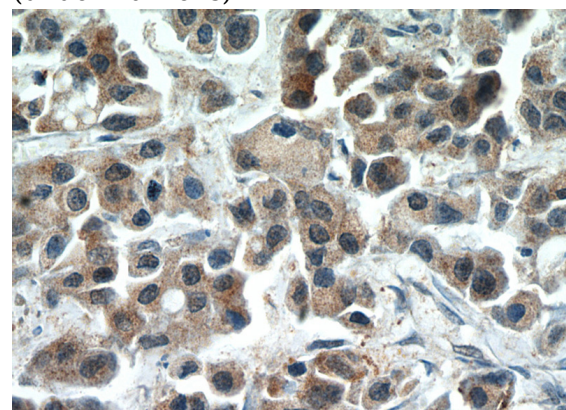
ELISA, WB, IHC

Dilutions

Recommended Dilution:

WB: 1:500-1:5000

Immunohistochemical of paraffin-embedded human breast cancer using Catalog No:114692(RERG antibody) at dilution of 1:50 (under 10x lens)

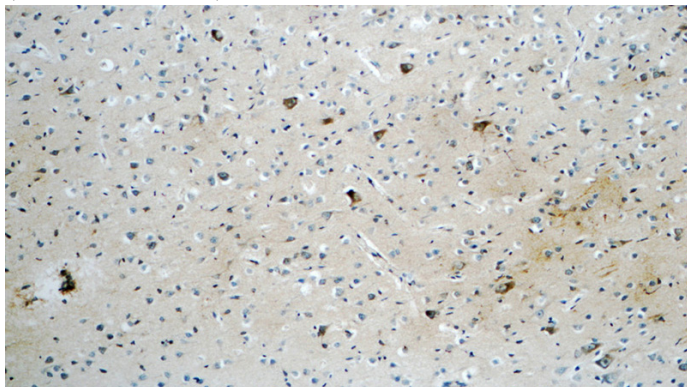


Immunohistochemical of paraffin-embedded human breast cancer using Catalog No:114692(RERG antibody) at dilution of 1:50

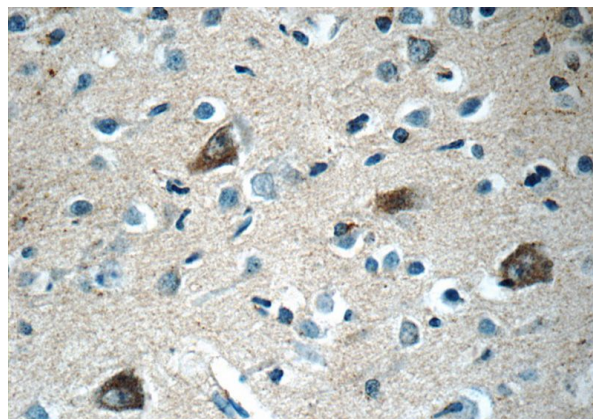
RERG antibody

Catalog Number: 114692

(under 40x lens)



Immunohistochemistry of paraffin-embedded human brain tissue slide using Catalog No:114692(RERG Antibody) at dilution of 1:50 (under 10x lens)



Immunohistochemistry of paraffin-embedded human brain tissue slide using Catalog No:114692(RERG Antibody) at dilution of 1:50 (under 40x lens)