

# REPS2 antibody



Catalog Number: 114691

## Product name

REPS2 antibody

## Specificity

human, mouse; other species not tested.

## Antibody description

REPS2 Rabbit Polyclonal antibody. Positive WB detected in mouse brain tissue, mouse kidney tissue, human testis tissue. Positive IF detected in HepG2. Observed molecular weight by Western-blot: 72kd,55kd,30kd

## Preparation

This antibody was obtained by immunization of Peptide (Accession Number: NM\_004726). Purification method: Antigen affinity purified.

## Formulation

PBS with 0.02% sodium azide and 50% glycerol pH 7.3.

## Storage

Store at -20°C. DO NOT ALIQUOT

## Clonality

Polyclonal

## Ig Type

Rabbit IgG

## Applications

ELISA, WB, IF

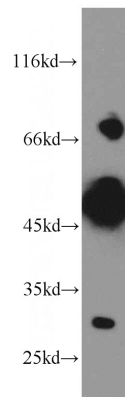
## Dilutions

Recommended Dilution:

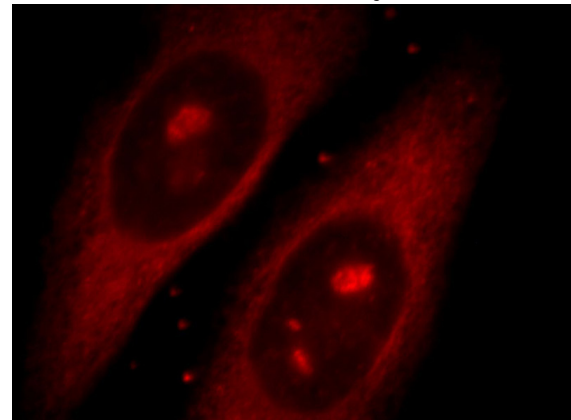
WB: 1:500-1:5000

IF: 1:10-1:100

## Validations



mouse brain tissue were subjected to SDS PAGE followed by western blot with Catalog No:114691(REPS2 antibody) at dilution of 1:300



Immunofluorescent analysis of HepG2 cells, using REPS2 antibody Catalog No:114691 at 1:25 dilution and Rhodamine-labeled goat anti-rabbit IgG (red).