

# Renin receptor,ATP6AP2 antibody



Catalog Number: 114690

## Product name

Renin receptor,ATP6AP2 antibody

## Specificity

Human,Mouse,Rat; other species not tested.

## Antibody description

Renin receptor,ATP6AP2 Rabbit Polyclonal antibody. Positive IHC detected in human heart tissue. Positive WB detected in mouse eye tissue, human retinal pigment epithelium tissue, Y79 cells. Observed molecular weight by Western-blot: 45-47 kDa

## Preparation

This antibody was obtained by immunization of Renin receptor,ATP6AP2 recombinant protein (Accession Number: BC010395). Purification method: Antigen affinity purified.

## Formulation

PBS with 0.1% sodium azide and 50% glycerol pH 7.3.

## Storage

Store at -20°C. DO NOT ALIQUOT

## Clonality

Polyclonal

## Ig Type

Rabbit IgG

## Applications

ELISA, WB, IHC

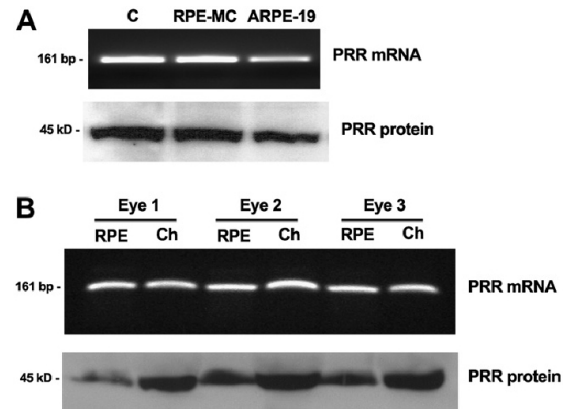
## Dilutions

Recommended Dilution:

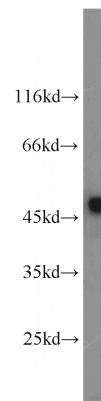
WB: 1:200-1:2000

IHC: 1:20-1:200

## Validations

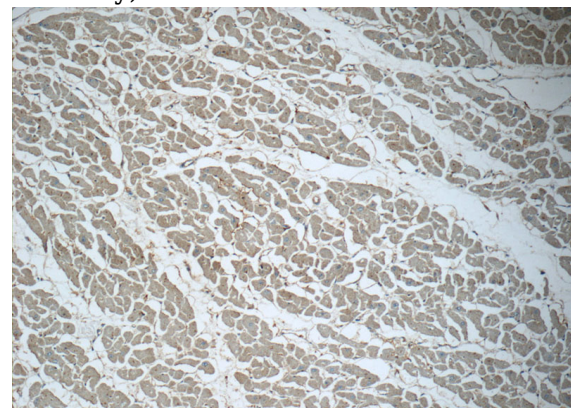


WB result from Oscar Alcazar, et al, (Pro)renin receptor is expressed in human retinal pigment epithelium and participates in extracellular matrix remodeling, Exp Eye Res. 89(5) 638-47 (2009)



(PMID:19580809). Eye 45kd.

mouse eye tissue were subjected to SDS PAGE followed by western blot with Catalog No:114690(RENIN-RECEPTOR,ATP6AP2 antibody) at dilution of 1:600



Immunohistochemistry of paraffin-embedded

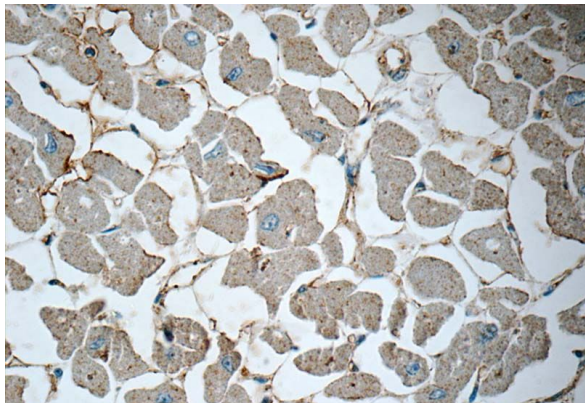
# Renin receptor,ATP6AP2 antibody



Catalog Number: 114690

---

human heart tissue slide using Catalog No:114690 (RENIN-RECEPTOR, ATP6AP2 Antibody) at dilution of 1:50 (under 10x lens)



Immunohistochemistry of paraffin-embedded human heart tissue slide using Catalog No:114690 (RENIN-RECEPTOR, ATP6AP2 Antibody) at dilution of 1:50 (under 40x lens)