

Renin antibody

Catalog Number: 114689

Product name

Renin antibody

IHC: 1:20-1:200

IF: 1:20-1:200

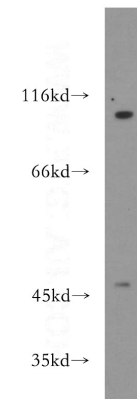
Specificity

Human, Mouse, Rat; other species not tested.

Validations

Antibody description

Renin Rabbit Polyclonal antibody. Positive WB detected in mouse heart tissue. Positive IF detected in HepG2 cells. Positive IHC detected in human kidney tissue, human gliomas tissue, mouse kidney tissue. Observed molecular weight by Western-blot: 45-47 kDa



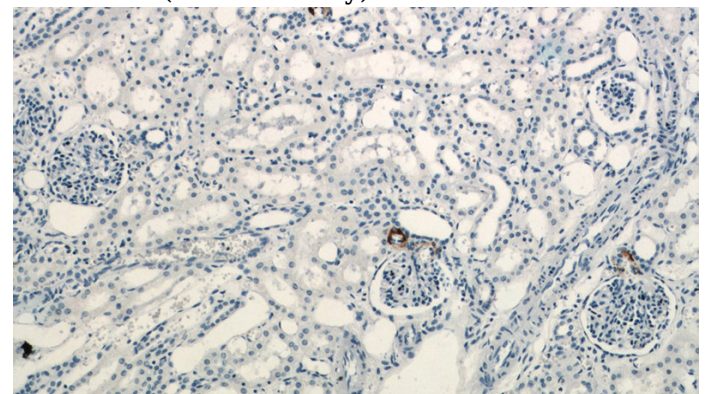
Preparation

This antibody was obtained by immunization of Renin recombinant protein (Accession Number: NM_000537). Purification method: Antigen affinity purified.

mouse heart tissue were subjected to SDS PAGE followed by western blot with Catalog No:114689 (REN antibody) at dilution of 1:300

Formulation

PBS with 0.02% sodium azide and 50% glycerol pH 7.3.



Storage

Store at -20°C. DO NOT ALIQUOT

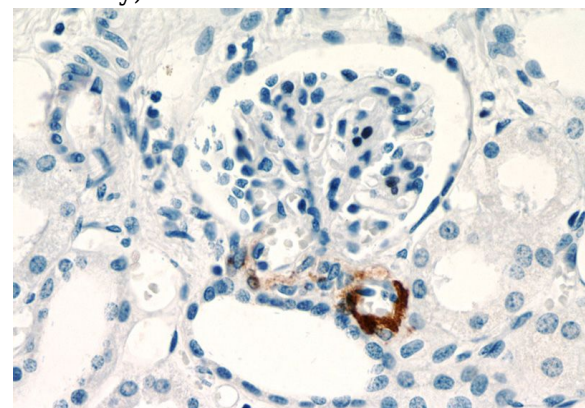
Clonality

Polyclonal

Immunohistochemistry of paraffin-embedded human kidney slide using Catalog No:114689 (REN Antibody) at dilution of 1:200

Ig Type

Rabbit IgG



Applications

ELISA, WB, IF, IHC

Dilutions

Recommended Dilution:

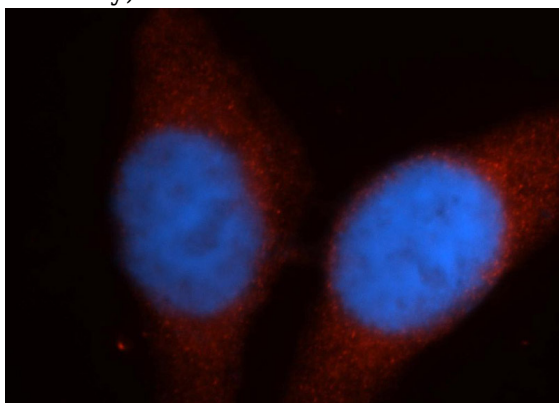
WB: 1:200-1:1000

Immunohistochemistry of paraffin-embedded human kidney slide using Catalog No:114689 (REN

Renin antibody

Catalog Number: 114689

Antibody) at dilution of 1:200



Immunofluorescent analysis of HepG2 cells, using REN antibody Catalog No:114689 at 1:50 dilution and Rhodamine-labeled goat anti-rabbit IgG (red). Blue pseudocolor = DAPI (fluorescent DNA dye).