

RENALASE antibody



Catalog Number: 114688

Product name

RENALASE antibody

Immunogen

[Human RENALASE Recombinant protein \(His tag\)](#)

Specificity

Human, Mouse, Rat; other species not tested.

Antibody description

RENALASE Rabbit Polyclonal antibody. Positive WB detected in human heart tissue, mouse small intestine tissue. Positive IP detected in HEK-293 cells. Positive IHC detected in human kidney tissue. Observed molecular weight by Western-blot: 35 kDa

Preparation

This antibody was obtained by immunization of RENALASE recombinant protein (Accession Number: NM_001031709). Purification method: Antigen affinity purified.

Formulation

PBS with 0.02% sodium azide and 50% glycerol pH 7.3.

Storage

Store at -20°C. DO NOT ALIQUOT

Clonality

Polyclonal

Ig Type

Rabbit IgG

Applications

ELISA, WB, IHC, IP

Dilutions

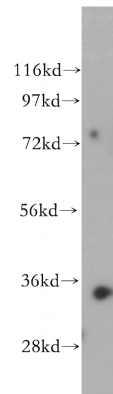
Recommended Dilution:

WB: 1:500-1:5000

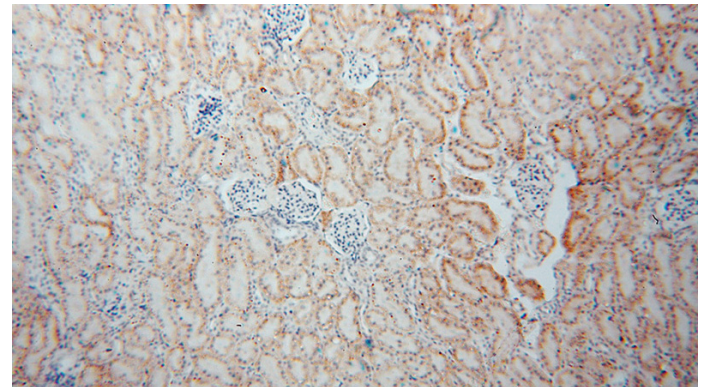
IP: 1:200-1:2000

IHC: 1:20-1:200

Validations



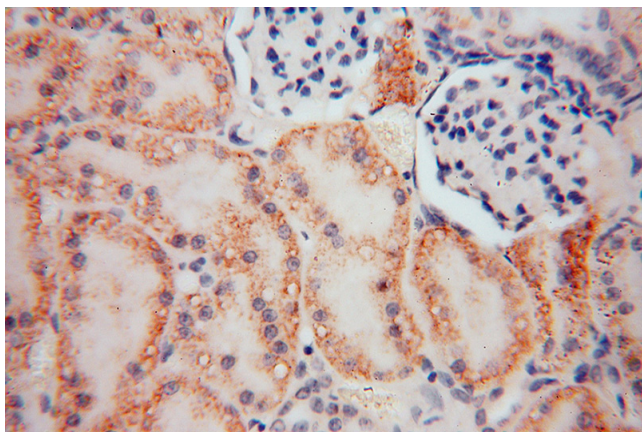
human heart tissue were subjected to SDS PAGE followed by western blot with Catalog No:114688(RENALASE antibody) at dilution of 1:500



Immunohistochemical of paraffin-embedded human kidney using Catalog No:114688(RENALASE antibody) at dilution of 1:100 (under 10x lens)

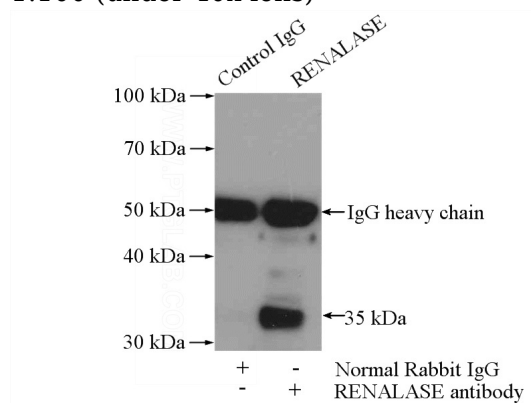
RENALASE antibody

Catalog Number: 114688



Immunohistochemical of paraffin-embedded human kidney using Catalog No:114688(RENALASE antibody) at dilution of

1:100 (under 40x lens)



IP Result of anti-RENALASE (IP:Catalog No:114688, 4ug; Detection:Catalog No:114688 1:500) with HEK-293 cells lysate 2000ug.