

# REEP6 antibody



Catalog Number: 114682

## Product name

REEP6 antibody

Recommended Dilution:

WB: 1:500-1:5000

## Immunogen

[Human REEP6 Recombinant protein \(GST tag\)](#)

IHC: 1:20-1:200

IF: N/A

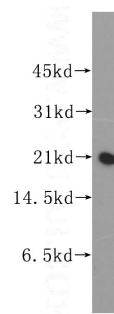
## Specificity

Human, Mouse, Rat; other species not tested.

## Validations

## Antibody description

REEP6 Rabbit Polyclonal antibody. Positive IHC detected in human pancreas cancer tissue. Positive IF detected in mouse olfactory epithelium tissue. Positive WB detected in BxPC-3 cells. Observed molecular weight by Western-blot: 22kd



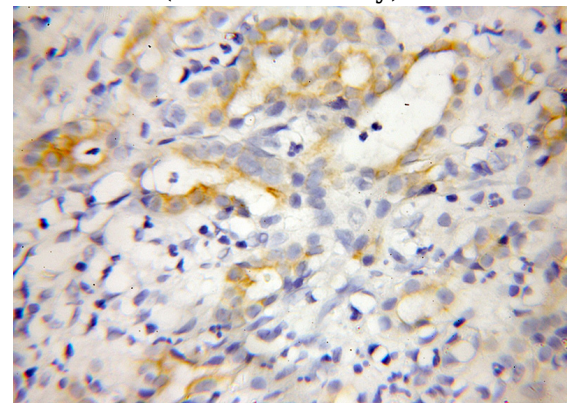
## Preparation

This antibody was obtained by immunization of REEP6 recombinant protein (Accession Number: NM\_138393). Purification method: Antigen affinity purified.

BxPC-3 cells were subjected to SDS PAGE followed by western blot with Catalog No:114682(REEP6 antibody) at dilution of 1:400

## Formulation

PBS with 0.1% sodium azide and 50% glycerol pH 7.3.



## Storage

Store at -20°C. DO NOT ALIQUOT

## Clonality

Polyclonal

## Ig Type

Rabbit IgG

## Applications

ELISA, WB, IHC, IF

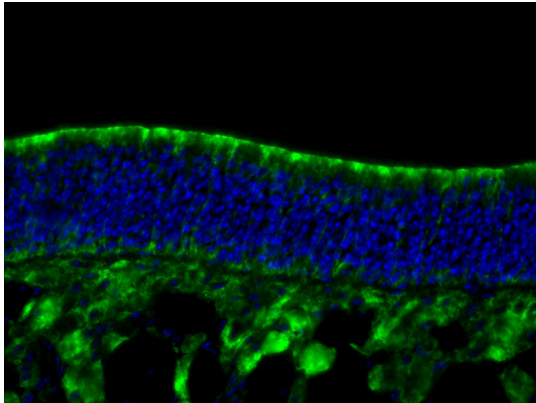
Immunohistochemical of paraffin-embedded human pancreas cancer using Catalog No:114682(REEP6 antibody) at dilution of 1:50 (under 10x lens)

## Dilutions

# REEP6 antibody

Catalog Number: 114682

---



Fluorescent IHC on 1%PLP fixed frozen mouse olfactory epithelium tissue of REEP6 antibody (Catalog No:114682, 1:100). Excellent staining of Sus cells on the apical layer as well as their basal projections. By Dr. Brian Lin (Schwob Lab).