

# REEP5 antibody



Catalog Number: 114681

## Product name

REEP5 antibody

## Immunogen

[Human REEP5 Recombinant protein \(His tag\)](#)

## Specificity

Human, Mouse, Rat; other species not tested.

## Antibody description

REEP5 Rabbit Polyclonal antibody. Positive IP detected in HeLa cells. Positive WB detected in human liver tissue, HeLa cells, human brain tissue, mouse brain tissue, rat brain tissue. Positive FC detected in HeLa cells. Positive IHC detected in human colon cancer tissue. Positive IF detected in HeLa cells. Observed molecular weight by Western-blot: 21 kDa

## Preparation

This antibody was obtained by immunization of REEP5 recombinant protein (Accession Number: BC065926). Purification method: Antigen affinity purified.

## Formulation

PBS with 0.02% sodium azide and 50% glycerol pH 7.3.

## Storage

Store at -20°C. DO NOT ALIQUOT

## Clonality

Polyclonal

## Ig Type

Rabbit IgG

## Applications

ELISA, WB, IHC, IP, IF, FC

## Dilutions

Recommended Dilution:

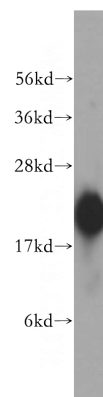
WB: 1:1000-1:10000

IP: 1:500-1:5000

IHC: 1:20-1:200

IF: 1:20-1:200

## Validations



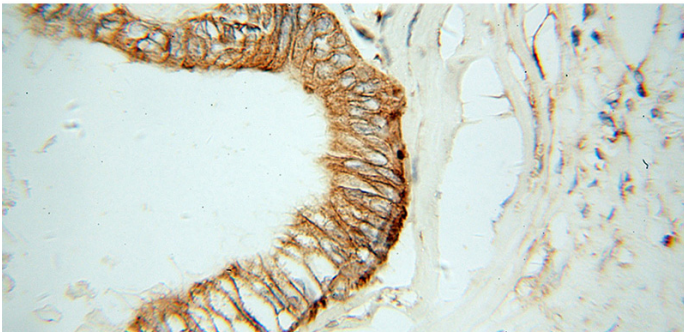
human liver tissue were subjected to SDS PAGE followed by western blot with Catalog No:114681(REEP5 antibody) at dilution of 1:500



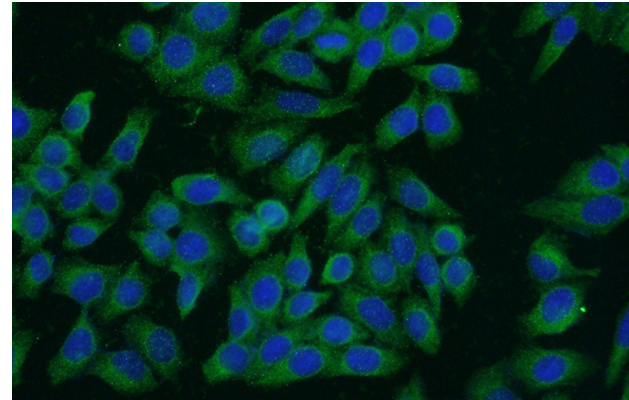
Immunohistochemical of paraffin-embedded human colon cancer using Catalog No:114681(REEP5 antibody) at dilution of 1:100 (under 10x lens)

# REEP5 antibody

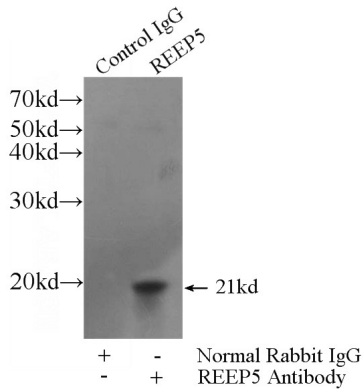
Catalog Number: 114681



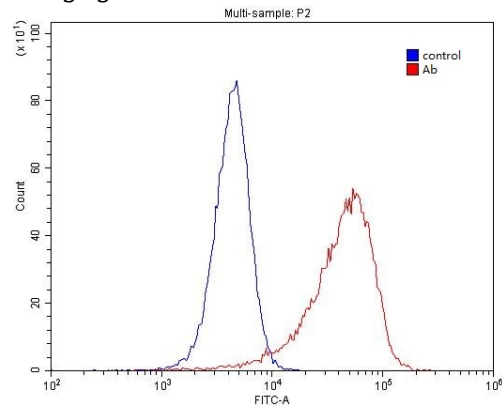
Immunohistochemical of paraffin-embedded human colon cancer using Catalog No:114681(REEP5 antibody) at dilution of 1:100 (under 40x lens)



Immunofluorescent analysis of (-20oc Ethanol) fixed HeLa cells using Catalog No:114681(REEP5 Antibody) at dilution of 1:50 and Alexa Fluor 488-conjugated AffiniPure Goat Anti-Rabbit IgG(H+L)



IP Result of anti-REEP5 (IP:Catalog No:114681, 3ug; Detection:Catalog No:114681 1:1000) with HeLa cells lysate 2400ug.



1X10<sup>6</sup> HeLa cells were stained with .2ug REEP5 antibody (Catalog No:114681, red) and control antibody (blue). Fixed with 4% PFA blocked with 3% BSA (30 min). Alexa Fluor 488-conjugated AffiniPure Goat Anti-Rabbit IgG(H+L) with dilution 1:1500.