

RECQL5 antibody



Catalog Number: 114677

Product name

RECQL5 antibody

IHC: 1:20-1:200

IF: 1:20-1:200

Specificity

human, mouse, rat; other species not tested.

Antibody description

RECQL5 Rabbit Polyclonal antibody. Positive IHC detected in human pancreas cancer. Positive IF detected in HepG2. Positive WB detected in mouse testis tissue, HeLa cells, Jurkat cells. Observed molecular weight by Western-blot: 45 kDa

Preparation

This antibody was obtained by immunization of RECQL5 recombinant protein (Accession Number: XM_017025344). Purification method: Antigen affinity purified.

Formulation

PBS with 0.02% sodium azide and 50% glycerol pH 7.3.

Storage

Store at -20°C. DO NOT ALIQUOT

Clonality

Polyclonal

Ig Type

Rabbit IgG

Applications

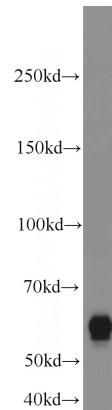
ELISA, WB, IHC, IF

Dilutions

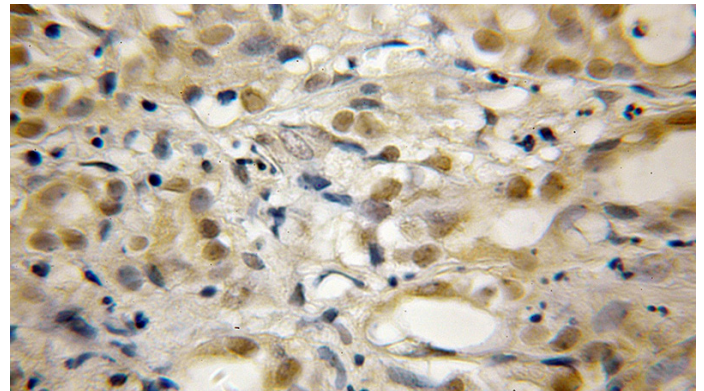
Recommended Dilution:

WB: 1:500-1:5000

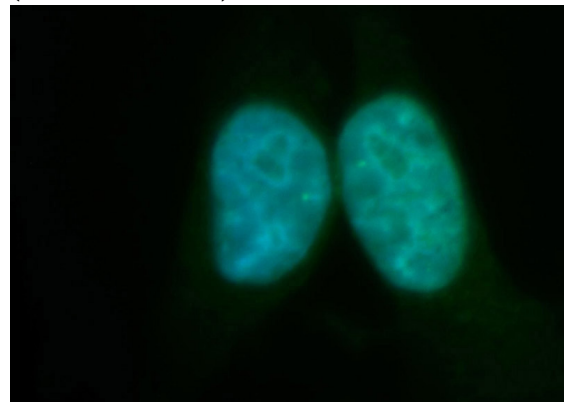
Validations



mouse testis tissue were subjected to SDS PAGE followed by western blot with Catalog No:114677(RECQL5 antibody) at dilution of 1:1000



Immunohistochemical of paraffin-embedded human pancreas cancer using Catalog No:114677(RECQL5 antibody) at dilution of 1:50 (under 10x lens)



RECQL5 antibody



Catalog Number: 114677

Immunofluorescent analysis of HepG2 cells, using RECQL5 antibody Catalog No:114677 at 1:100 dilution and FITC-labeled donkey anti-rabbit

IgG(green). Blue pseudocolor = DAPI (fluorescent DNA dye).