

# Recoverin antibody



Catalog Number: 114675

## Product name

Recoverin antibody

## Specificity

Human, Mouse, Rat; other species not tested.

## Antibody description

Recoverin Rabbit Polyclonal antibody. Positive WB detected in mouse eye tissue, Y79 cells. Observed molecular weight by Western-blot: 23kd

## Preparation

This antibody was obtained by immunization of Recoverin recombinant protein (Accession Number: NM\_002903). Purification method: Antigen affinity purified.

## Formulation

PBS with 0.1% sodium azide and 50% glycerol pH 7.3.

## Storage

Store at -20°C. DO NOT ALIQUOT

## Clonality

Polyclonal

## Ig Type

Rabbit IgG

## Applications

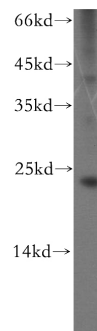
ELISA, WB, IF

## Dilutions

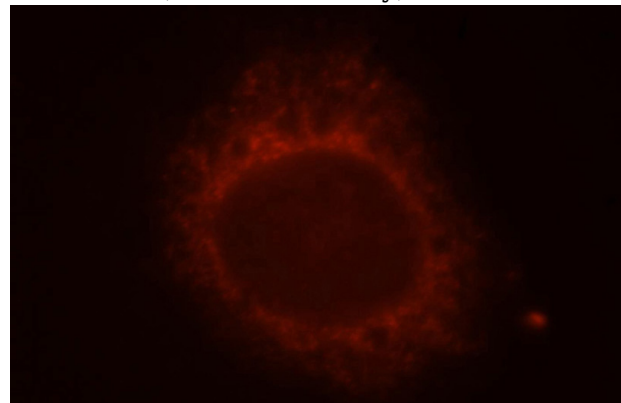
Recommended Dilution:

WB: 1:200-1:2000

## Validations



mouse eye tissue were subjected to SDS PAGE followed by western blot with Catalog No:114675(RCVRN antibody) at dilution of 1:400



Immunofluorescent analysis of MCF-7 cells, using RCVRN antibody Catalog No:114675 at 1:25 dilution and Rhodamine-labeled goat anti-rabbit IgG (red).