

RHOXF2 antibody



Catalog Number: 114665

Product name

RHOXF2 antibody

Specificity

human; other species not tested.

Antibody description

RHOXF2 Rabbit Polyclonal antibody. Positive WB detected in K-562 cells. Observed molecular weight by Western-blot: 35-38kd

Preparation

This antibody was obtained by immunization of RHOXF2 recombinant protein (Accession Number: NM_032498). Purification method: Antigen affinity purified.

Formulation

PBS with 0.1% sodium azide and 50% glycerol pH 7.3.

Storage

Store at -20°C. DO NOT ALIQUOT

Clonality

Polyclonal

Ig Type

Rabbit IgG

Applications

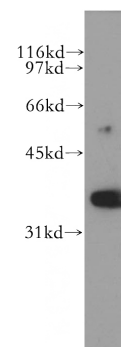
ELISA, WB

Dilutions

Recommended Dilution:

WB: 1:500-1:5000

Validations



K-562 cells were subjected to SDS PAGE followed by western blot with Catalog No:114665(RHOXF2 antibody) at dilution of 1:500