

RhoGDI antibody



Catalog Number: 114663

Product name

RhoGDI antibody

IHC: 1:20-1:200

Specificity

Human, Mouse, Rat; other species not tested.

Antibody description

RhoGDI Rabbit Polyclonal antibody. Positive WB detected in Jurkat cells, A431 cells, HEK-293 cells, HeLa cells, HL-60 cells, mouse pancreas tissue. Positive IHC detected in human breast cancer tissue, human colon cancer tissue. Observed molecular weight by Western-blot: 28 kDa

Preparation

This antibody was obtained by immunization of RhoGDI recombinant protein (Accession Number: NM_004309). Purification method: Protein A purified.

Formulation

PBS with 0.1% sodium azide and 50% glycerol pH 7.3.

Storage

Store at -20°C. DO NOT ALIQUOT

Clonality

Polyclonal

Ig Type

Rabbit IgG

Applications

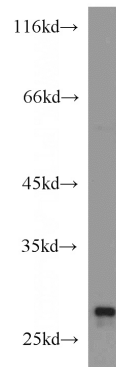
ELISA, WB, IHC

Dilutions

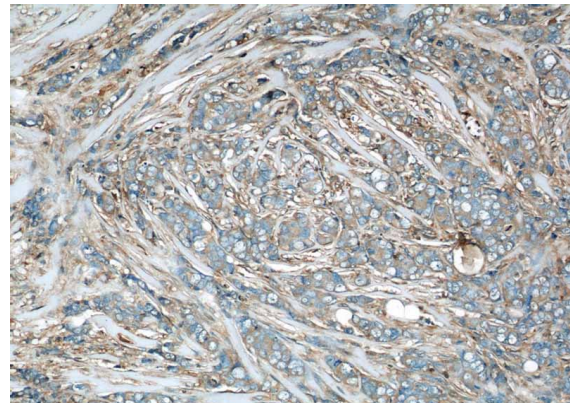
Recommended Dilution:

WB: 1:500-1:5000

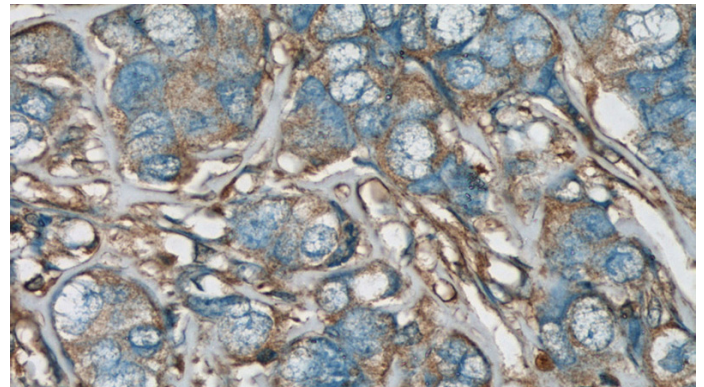
Validations



Jurkat cells were subjected to SDS PAGE followed by western blot with Catalog No:114663 (ARHGDI, aGDI antibody) at dilution of 1:1000



Immunohistochemical of paraffin-embedded human breast cancer using Catalog No:114663 (ARHGDI, aGDI antibody) at dilution of 1:50 (under 10x lens)



Immunohistochemical of paraffin-embedded human breast cancer using Catalog

RhoGDI antibody



Catalog Number: 114663

No:114663(ARHGDI A, aGDI antibody) at dilution of 1:50 (under 40x lens)