

# RGN/SMP30 antibody



Catalog Number: 114638

## Product name

RGN/SMP30 antibody

## Specificity

Human, Mouse, Rat; other species not tested.

## Antibody description

RGN/SMP30 Rabbit Polyclonal antibody. Positive IP detected in mouse liver tissue. Positive WB detected in mouse liver tissue, mouse small intestine tissue, rat liver tissue. Positive IHC detected in human liver tissue, human hepat°Cirrhosis tissue, human kidney tissue. Observed molecular weight by Western-blot: 33 kDa

## Preparation

This antibody was obtained by immunization of RGN/SMP30 recombinant protein (Accession Number: NM\_004683). Purification method: Antigen affinity purified.

## Formulation

PBS with 0.02% sodium azide and 50% glycerol pH 7.3.

## Storage

Store at -20°C. DO NOT ALIQUOT

## Clonality

Polyclonal

## Ig Type

Rabbit IgG

## Applications

ELISA, WB, IHC, IP

## Dilutions

Recommended Dilution:

WB: 1:200-1:2000

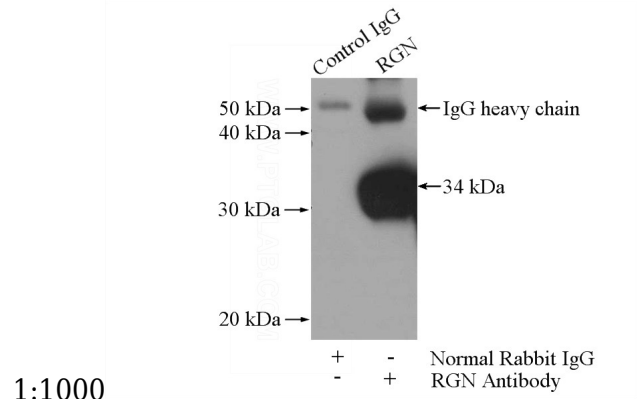
IP: 1:500-1:5000

IHC: 1:20-1:200

## Validations



mouse liver tissue were subjected to SDS PAGE followed by western blot with Catalog No:114638(RGN,SMP30 antibody) at dilution of



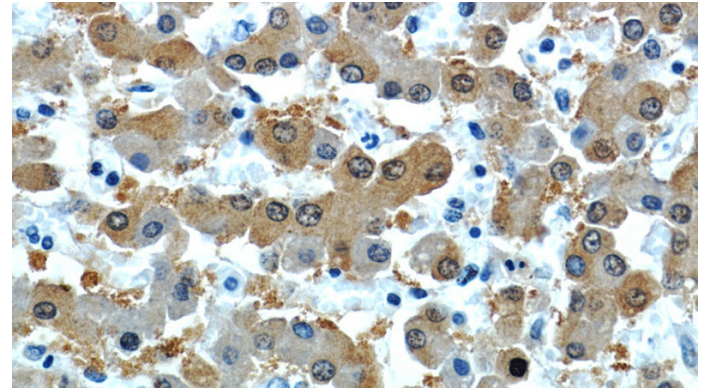
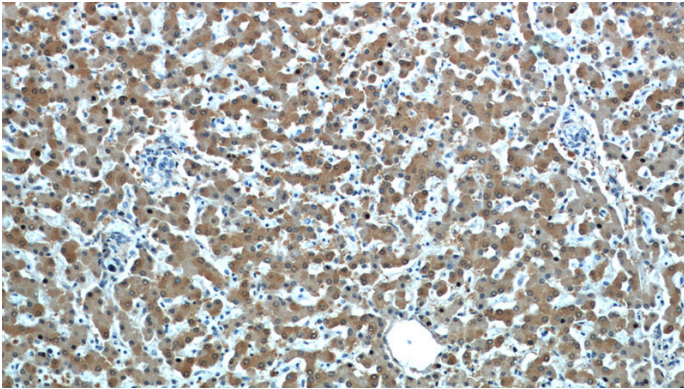
1:1000

IP Result of anti-RGN,SMP30 (IP:Catalog No:114638, 4ug; Detection:Catalog No:114638 1:1000) with mouse liver tissue lysate 4000ug.

# RGN/SMP30 antibody

Catalog Number: 114638

---



Immunohistochemistry of paraffin-embedded human liver slide using Catalog No:114638(RGN,SMP30 Antibody) at dilution of 1:50

Immunohistochemistry of paraffin-embedded human liver slide using Catalog No:114638(RGN,SMP30 Antibody) at dilution of 1:50