

# RFWD3 antibody

Catalog Number: 114633

## Product name

RFWD3 antibody

IHC: 1:20-1:200

IF: 1:20-1:200

## Specificity

human, mouse, rat; other species not tested.

## Antibody description

RFWD3 Rabbit Polyclonal antibody. Positive WB detected in mouse lung tissue. Positive IHC detected in human testis. Positive IF detected in Hela. Observed molecular weight by Western-blot: 85kd

## Preparation

This antibody was obtained by immunization of RFWD3 recombinant protein (Accession Number: BC002574). Purification method: Antigen affinity purified.

## Formulation

PBS with 0.02% sodium azide and 50% glycerol pH 7.3.

## Storage

Store at -20°C. DO NOT ALIQUOT

## Clonality

Polyclonal

## Ig Type

Rabbit IgG

## Applications

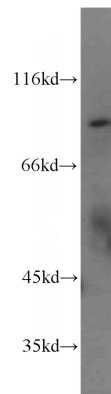
ELISA, WB, IHC, IF

## Dilutions

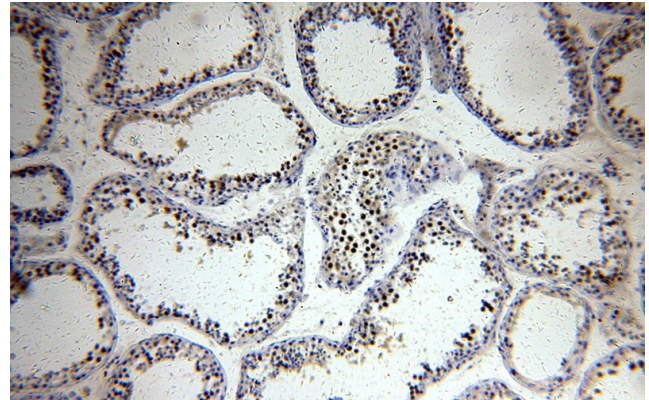
Recommended Dilution:

WB: 1:500-1:5000

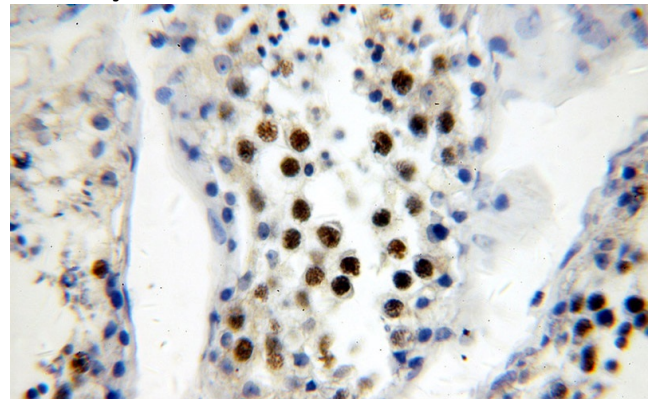
## Validations



mouse lung tissue were subjected to SDS PAGE followed by western blot with Catalog No:114633(RFWD3 antibody) at dilution of 1:1000



Immunohistochemical of paraffin-embedded human testis using Catalog No:114633(RFWD3 antibody) at dilution of 1:400 (under 10x lens)



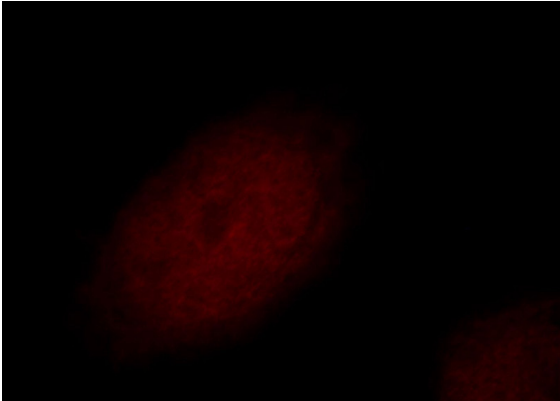
Immunohistochemical of paraffin-embedded human testis using Catalog No:114633(RFWD3 antibody) at dilution of 1:400 (under 10x lens)

# RFWD3 antibody

Catalog Number: 114633

---

antibody) at dilution of 1:400 (under 40x lens)



Immunofluorescent analysis of HeLa cells, using RFWD3 antibody Catalog No:114633 at 1:50 dilution and Rhodamine-labeled goat anti-rabbit IgG (red).