

# RFPL1/2/3 antibody



Catalog Number: 114630

## Product name

RFPL1/2/3 antibody

## Specificity

Human; other species not tested.

## Antibody description

RFPL1/2/3 Rabbit Polyclonal antibody. Positive WB detected in HeLa cells, SKOV-3 cells. Observed molecular weight by Western-blot: 35-37 kDa

## Preparation

This antibody was obtained by immunization of RFPL1/2/3 recombinant protein (Accession Number: NM\_006604). Purification method: Antigen affinity purified.

## Formulation

PBS with 0.1% sodium azide and 50% glycerol pH 7.3.

## Storage

Store at -20°C. DO NOT ALIQUOT

## Clonality

Polyclonal

## Ig Type

Rabbit IgG

## Applications

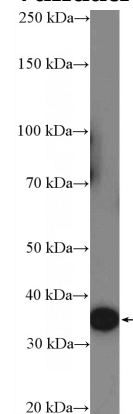
ELISA, WB

## Dilutions

Recommended Dilution:

WB: 1:200-1:1000

## Validations



HeLa cells were subjected to SDS PAGE followed by western blot with Catalog No:114630(RFPL3 Antibody) at dilution of 1:300