

REXO2 antibody

Catalog Number: 114621

Product name

REXO2 antibody

Specificity

Human, Mouse, Rat; other species not tested.

Antibody description

REXO2 Rabbit Polyclonal antibody. Positive IHC detected in human placenta tissue, human heart tissue. Positive WB detected in mouse liver tissue, L02 cells. Observed molecular weight by Western-blot: 27-30kd

Preparation

This antibody was obtained by immunization of REXO2 recombinant protein (Accession Number: BC003502). Purification method: Antigen affinity purified.

Formulation

PBS with 0.02% sodium azide and 50% glycerol pH 7.3.

Storage

Store at -20°C. DO NOT ALIQUOT

Clonality

Polyclonal

Ig Type

Rabbit IgG

Applications

ELISA, WB, IHC

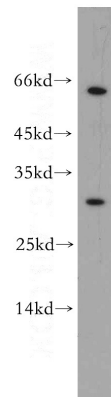
Dilutions

Recommended Dilution:

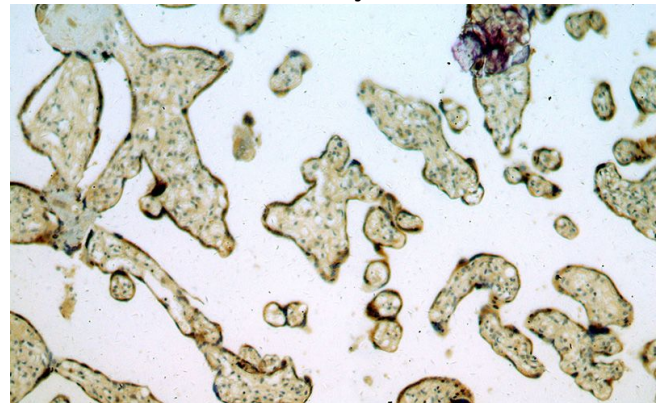
WB: 1:200-1:2000

IHC: 1:20-1:200

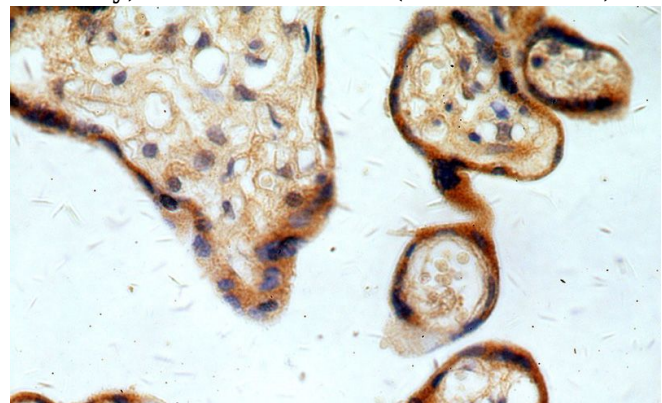
Validations



mouse liver tissue were subjected to SDS PAGE followed by western blot with Catalog No:114621 (REX2 antibody) at dilution of 1:300



Immunohistochemical of paraffin-embedded human placenta using Catalog No:114621 (REX2 antibody) at dilution of 1:50 (under 10x lens)



Immunohistochemical of paraffin-embedded human placenta using Catalog No:114621 (REX2 antibody) at dilution of 1:50 (under 40x lens)