

REX1 antibody



Catalog Number: 114620

Product name

REX1 antibody

Specificity

Human, Mouse, Rat; other species not tested.

Antibody description

REX1 Rabbit Polyclonal antibody. Positive IF detected in human embryonic stem cells. Observed molecular weight by Western-blot: 132kd

Preparation

This antibody was obtained by immunization of REX1 recombinant protein (Accession Number: NM_020695). Purification method: Antigen affinity purified.

Formulation

PBS with 0.02% sodium azide and 50% glycerol pH 7.3.

Storage

Store at -20°C. DO NOT ALIQUOT

Clonality

Polyclonal

Ig Type

Rabbit IgG

Applications

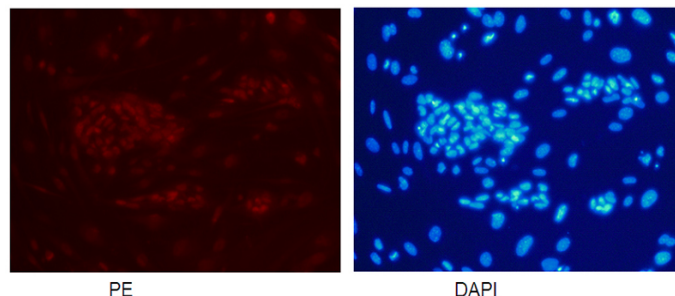
ELISA, IF

Dilutions

Recommended Dilution:

IF: 1:20-1:200

Validations



Confocal immunofluorescent analysis of human embryonic stem cells with 13503-1-AP at dilution of 1:50. The PE shows staining with 13503-1-AP/PE. The DAPI shows nuclear staining by DAPI. (20X)

Confocal immunofluorescent analysis of human embryonic stem cells with Catalog No:114620 at dilution of 1:50. The PE shows staining with Catalog No:114620/PE. The DAPI shows nuclear staining by DAPI. (20X)