

RBM41 antibody



Catalog Number: 114613

Product name

RBM41 antibody

IHC: 1:20-1:200

IF: 1:20-1:200

Specificity

human, mouse, rat; other species not tested.

Antibody description

RBM41 Rabbit Polyclonal antibody. Positive IHC detected in human endometrial cancer. Positive IF detected in HepG2. Positive WB detected in SGC-7901 cells. Observed molecular weight by Western-blot: 47 kDa

Preparation

This antibody was obtained by immunization of RBM41 recombinant protein (Accession Number: NM_018301). Purification method: Antigen affinity purified.

Formulation

PBS with 0.02% sodium azide and 50% glycerol pH 7.3.

Storage

Store at -20°C. DO NOT ALIQUOT

Clonality

Polyclonal

Ig Type

Rabbit IgG

Applications

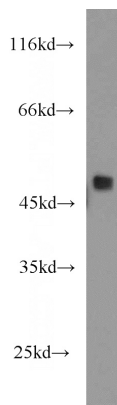
ELISA, WB, IHC, IF

Dilutions

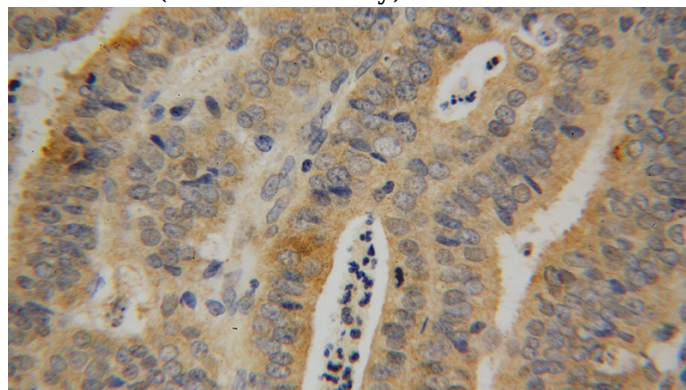
Recommended Dilution:

WB: 1:500-1:5000

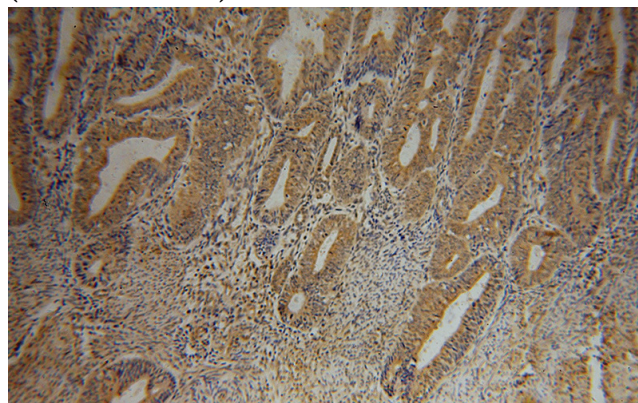
Validations



SGC-7901 cells were subjected to SDS PAGE followed by western blot with Catalog No:114613(RBM41 antibody) at dilution of 1:1500



Immunohistochemical of paraffin-embedded human endometrial cancer using Catalog No:114613(RBM41 antibody) at dilution of 1:100 (under 40x lens)

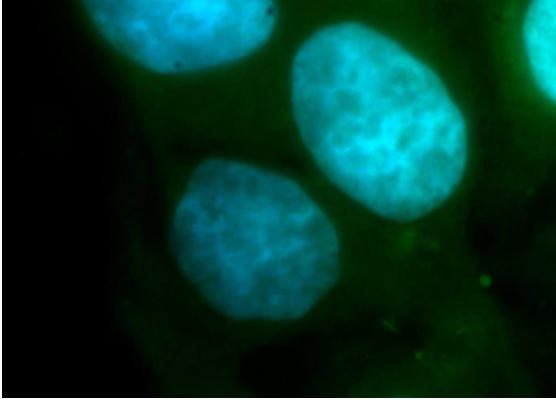


Immunohistochemical of paraffin-embedded

RBM41 antibody

Catalog Number: 114613

human endometrial cancer using Catalog No:114613(RBM41 antibody) at dilution of 1:100 (under 10x lens)



Immunofluorescent analysis of HepG2 cells, using RBM41 antibody Catalog No:114613 at 1:100 dilution and FITC-labeled donkey anti-rabbit IgG(green). Blue pseudocolor = DAPI (fluorescent DNA dye).